



8'x12' Storage Shed Plan

Disclaimer

The information provided here will show you how to build a chicken coop. However, we at howtoplans.org do not claim that the recommended techniques are the only way to accomplish this task. It will be the responsibility of each customer to ensure the application of the correct construction methods and the use of the proper materials.

In addition to the selection of the materials, the customer will be responsible for such construction issues as caulking, flashing, gluing, insulating and nailing, for ensuring adequate workmanship in the areas of installation, roofing and weatherproofing, and for any other items that are beyond the control of the designer. The materials mentioned in the plans do not represent an endorsement or recommendation of any particular product.

The Responsibility of Users

Despite our commitment to presenting accurate information, howtoplans.org is not liable for any errors or omissions appearing in the plans. Furthermore, howtoplans.org will not be liable for any consequential, special, incidental or indirect damages resulting from the use of this information. Our freedom from liability also extends to such issues as the loss of anticipated profits or business opportunities, and economic losses stemming from the use of howtoplans.org, regardless of whether there has been notification of such damage.

Liability

Those who utilize the methods described on howtoplans.org will be responsible for their own actions. We are not liable for any injuries or property damage that may arise from the use of the information appearing on this website. If you decide to use these plans, you should employ only quality materials and should always adhere to good safety practices. In the event that you are unable to complete the project on your own, you should contact a certified contractor to ensure that construction is completed with the highest standards.

Permissions

It is important to understand that planning and permission issues are dependent upon local requirements. Users of these plans are responsible for complying with the appropriate statutes and regulations, and for the proper implementation of the plans or other construction information provided by howtoplans.org. The city or county office in your area should be able to provide you with the relevant information.

Copyright

The text and illustrations that appear here are the exclusive property of howtoplans.org and are protected by federal copyright laws. The one-time use of the plans is limited to anyone who purchases them. The duplication, publication, sale or distribution of any portion of these plans without prior written consent from the original designer will be subject to the appropriate penalties for copyright infringement.

8'x12' Storage Shed Material List

Site Preparation

- Concrete
- Bricks

Bottom Frame

- Pressure-Treated Lumber
- Plywood

Wall Frames

- Pressure-Treated Lumber

Shed's Roof

- Pressure-Treated Lumber
- Pressure-Treated Board
- Plywood
- Building paper
- Asphalt shingles
- Metal drip edge

Shed's Door

- Pressure-Treated Lumber
- Wood siding boards
- Plywood

Walls Exterior Siding

- Pressure-Treated Lumber
- Wood siding boards

Top Frame

- Pressure-Treated Lumber

Fasteners & Hardware

- Door hinges
- Door pulls
- Surface bolt
- Galvanized nails
- Wood screws

STEP 1

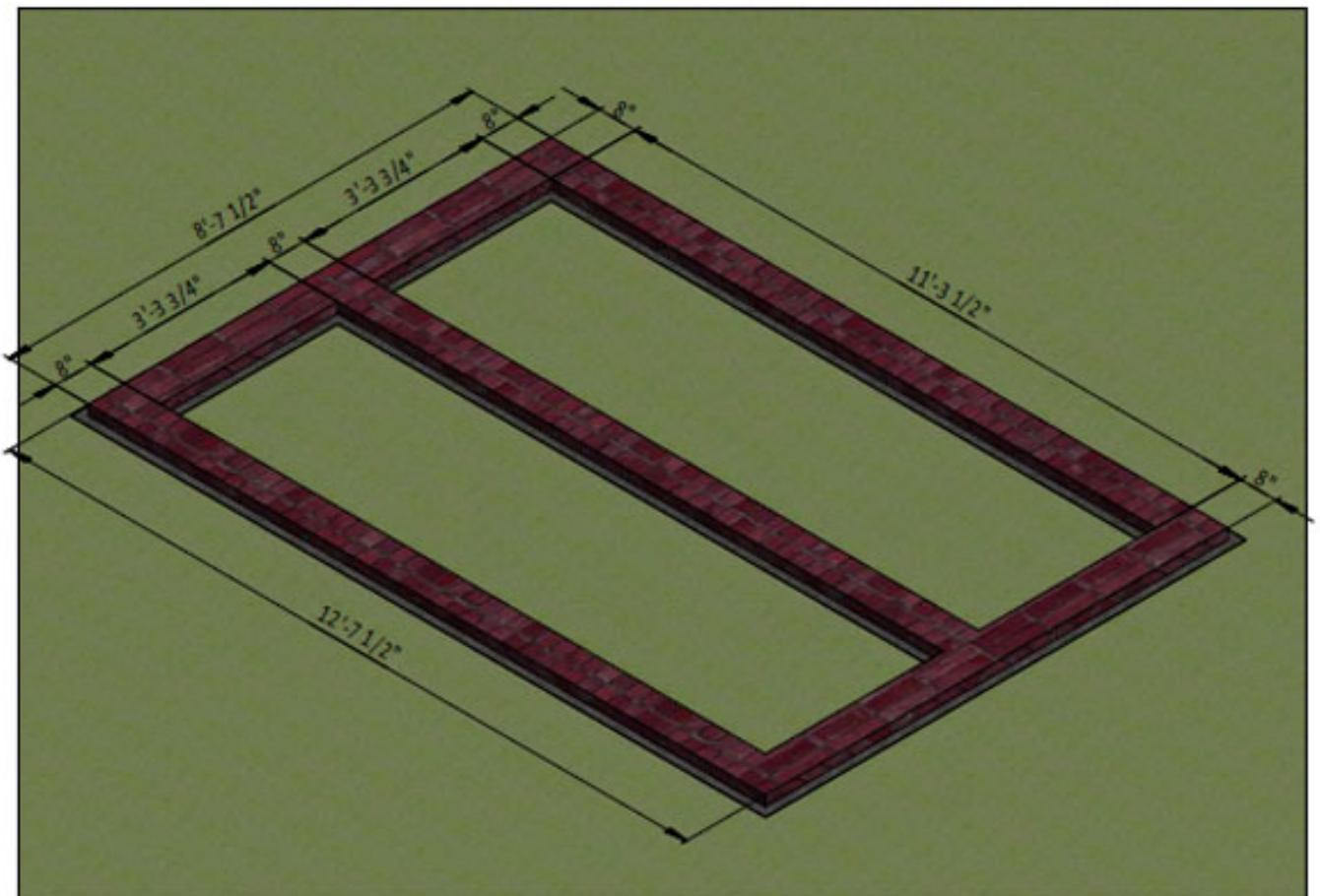
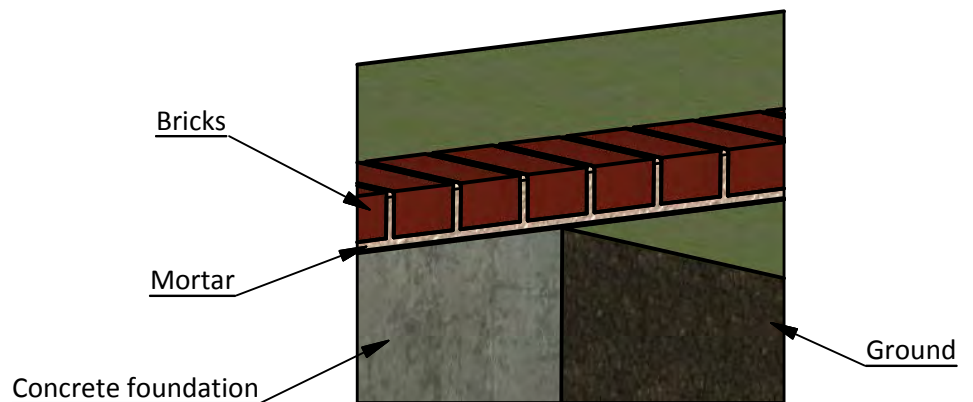
Foundation Preparation

1.1 Clear the area where you want to build the shed and layout for the foundation. Use the below illustration as a guide.

1.2 For the foundation, dig the trenches at least 1' wide and 1' deep.

1.3 Fill the trenches to ground level with concrete and let cure, or harden. Since curing times vary between brands, read the packaging for recommended curing times.

1.4 Once the concrete has cured, use standard-sized bricks and lay them across the foundation. You will need roughly 135 bricks for this step.



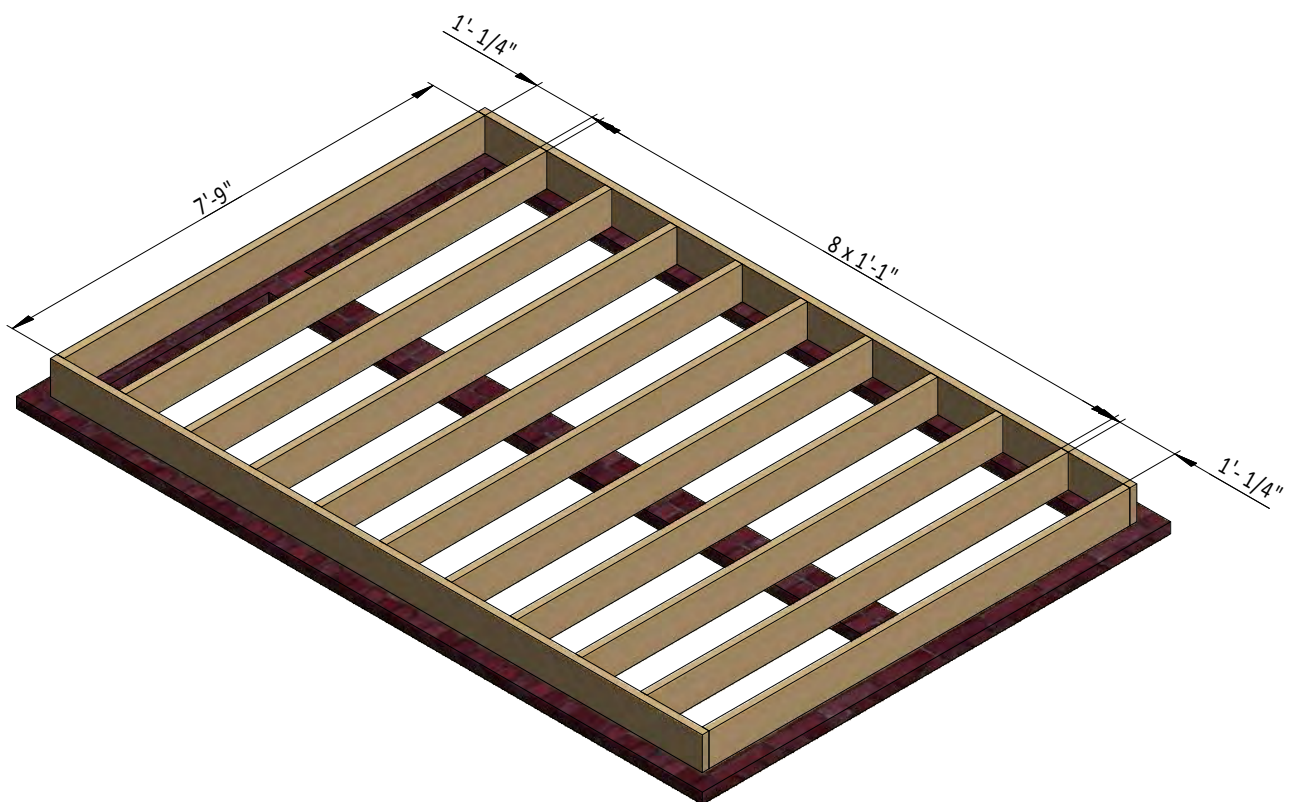
STEP 2

Framing the Floor

2.1 Make the floor joists using 1 1/2" x 7 1/4" pressure-treated lumber. You will need nine boards cut to 7'-9" for the joists.

2.2 Attach the joists with 8x5" Phillips flat head wood screws.

2.3 Check the corners to make sure they are 90°.



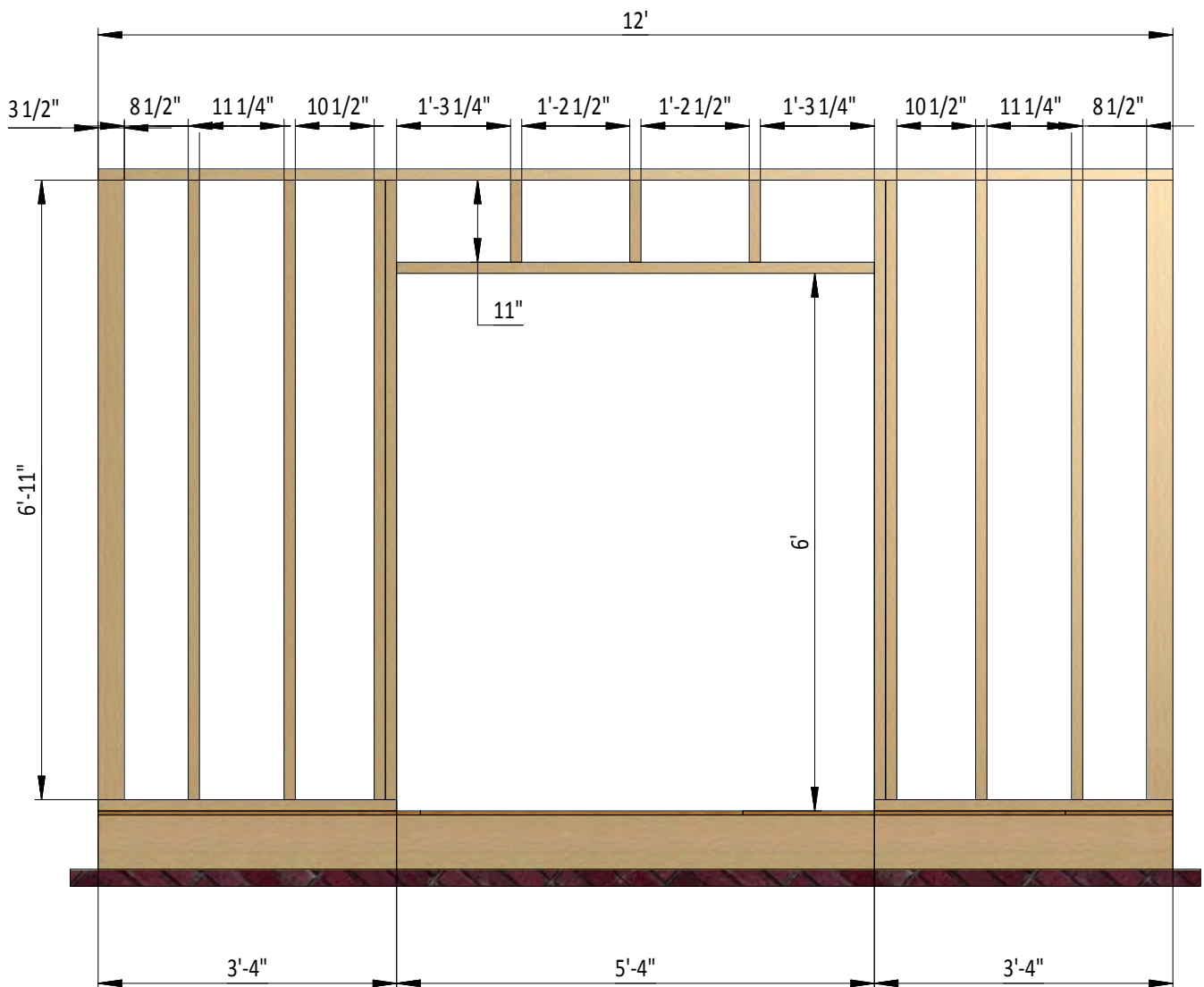
STEP 3

Assemble Front Wall Frame

3.1 Use $1\frac{1}{2}'' \times 3\frac{1}{2}''$ and $3\frac{1}{2}'' \times 3\frac{1}{2}''$ treated lumber to construct the front wall frame using the drawing below as a reference. You will need three boards cut to 11" to use as the cripple studs, one board cut to 5'-4" for the door header, ten boards cut to 6'-11" for the wall studs, two boards cut to 3'-4" for the bottom plates and one board cut to 12' to use as the top plate.

3.2 Attach the beams with 2x4" Phillips flat head wood screws.

3.3 Check the corners to make sure they are 90° so that the building will be square when finished.



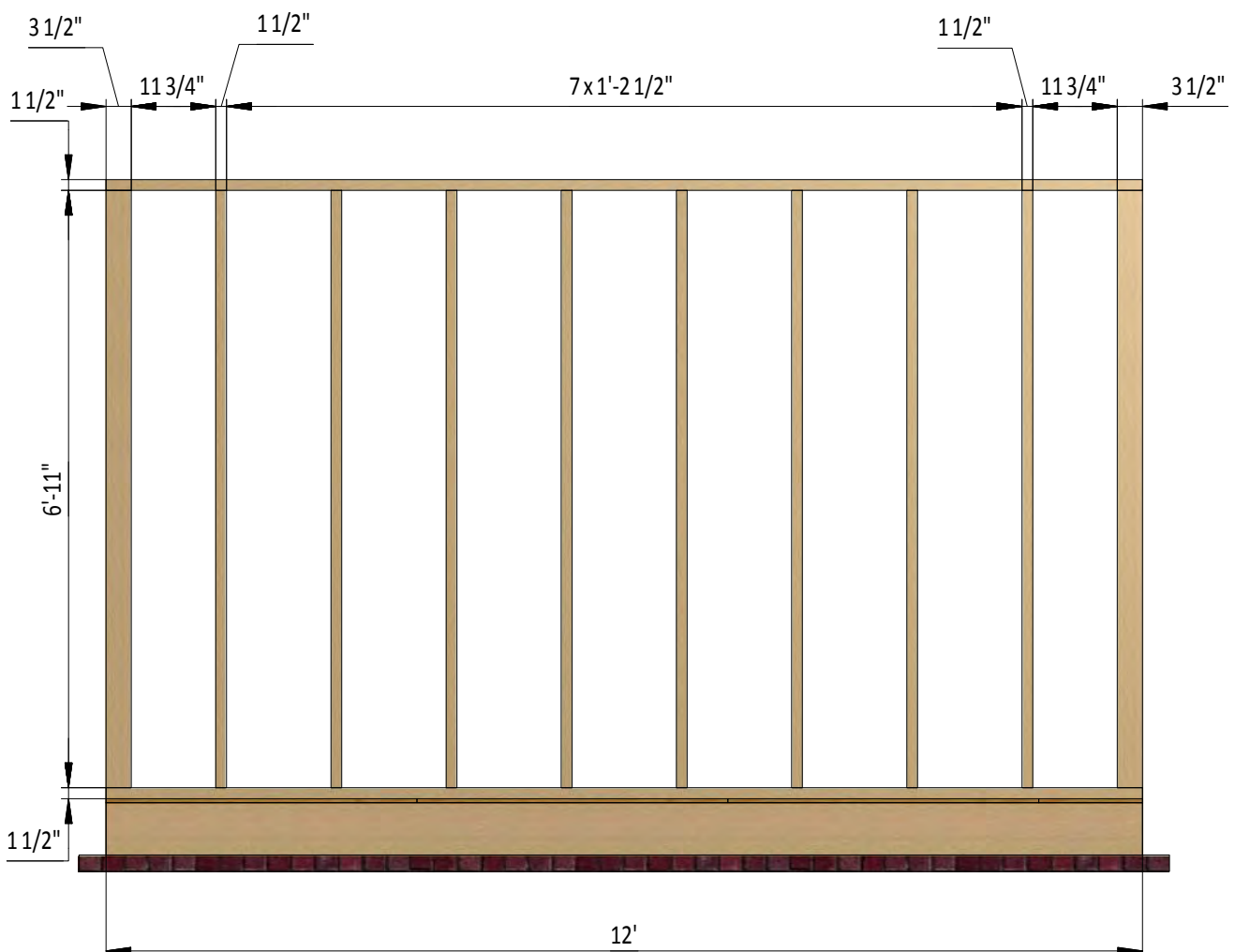
STEP 4

Assemble Back Wall Frame

4.1 Use 1 1/2" x 3 1/2" and 3 1/2" x 3 1/2" treated lumber to make the back wall frame using the drawing below as a reference. You will need ten boards cut to 6'-11" for the studs and two boards cut to 12' for the top and bottom plates.

4.2 Fasten the beams with 2x4" Phillips flat head wood screws.

4.3 Use the square of your choice to check the corners to make sure they are 90°.



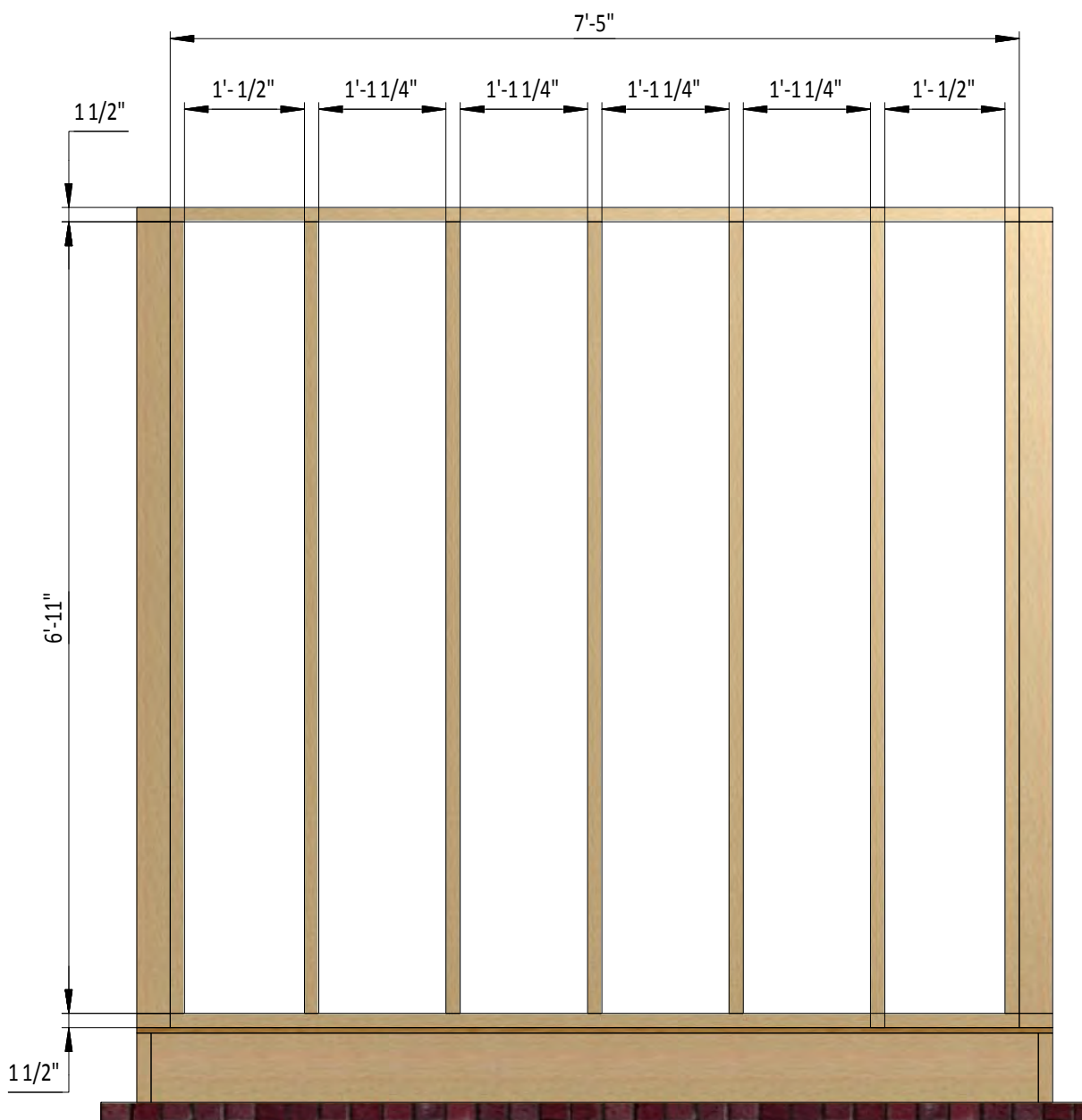
STEP 5

Assemble Left and Right Wall Frames

5.1 Using 1 1/2" x 3 1/2" pressure-treated lumber, construct the wall frames using the drawing below as a tool. You will need seven boards cut to 6'-11" for the wall studs and two boards cut to 7'-5" to make the top and bottom plates.

5.2 Join the beams with 2x4" flat head Phillips wood screws.

5.3 Be sure that the corners are 90° using a square of your choice.



STEP 6

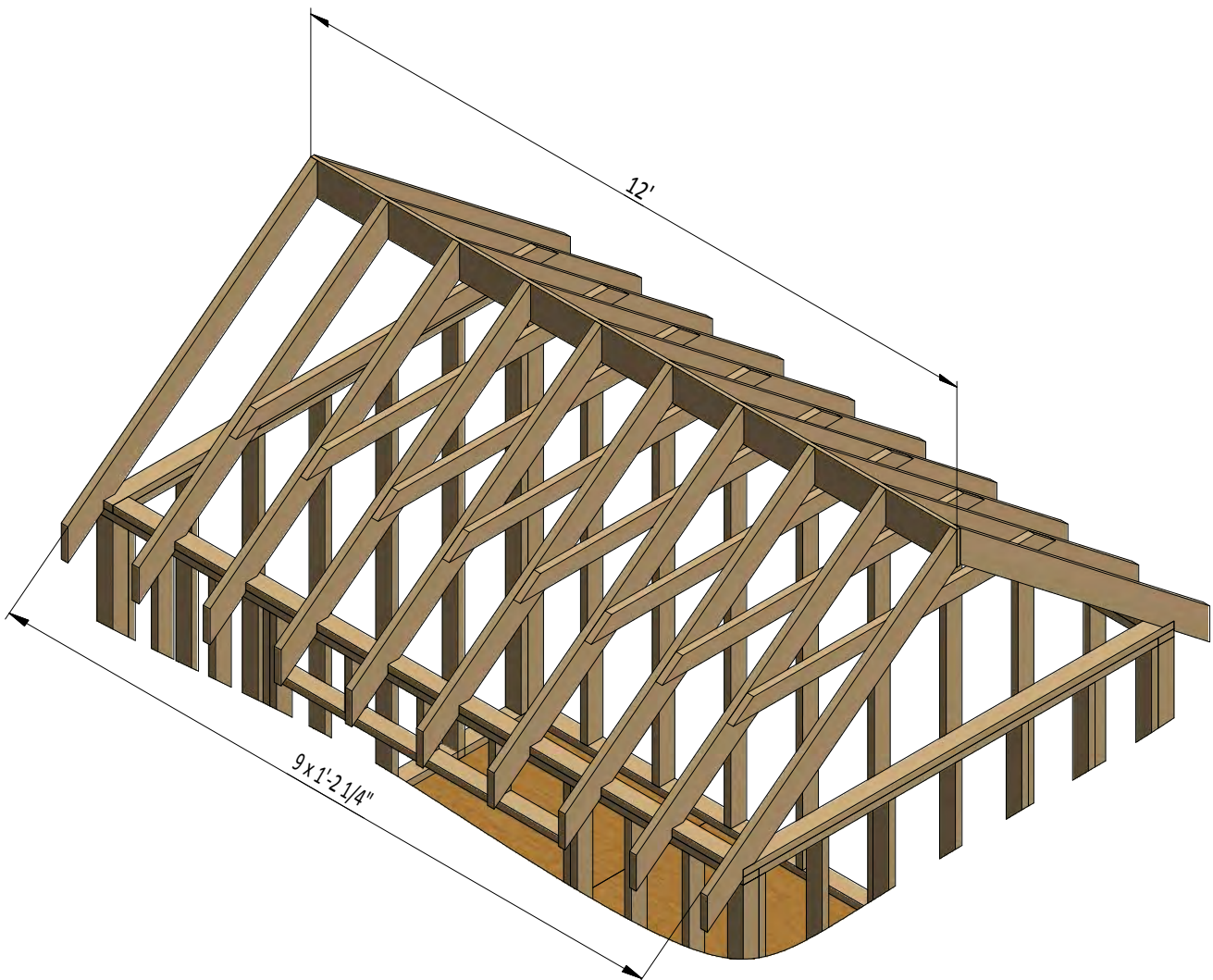
Assemble the Roof Frame

6.1 Use 1 1/2 " x 5 1/2 " treated lumber to cut 20 rafters 5'-10 1/4" long according to the dimensions.

6.2 Use 1 1/2 " x 3 1/2 " treated lumber to cut eight collar ties 5'-11 3/4" long according to the dimensions.

6.3 Use 3/4 " x 7 1/4 " treated wood to cut the ridge board 12' long according to the drawing below.

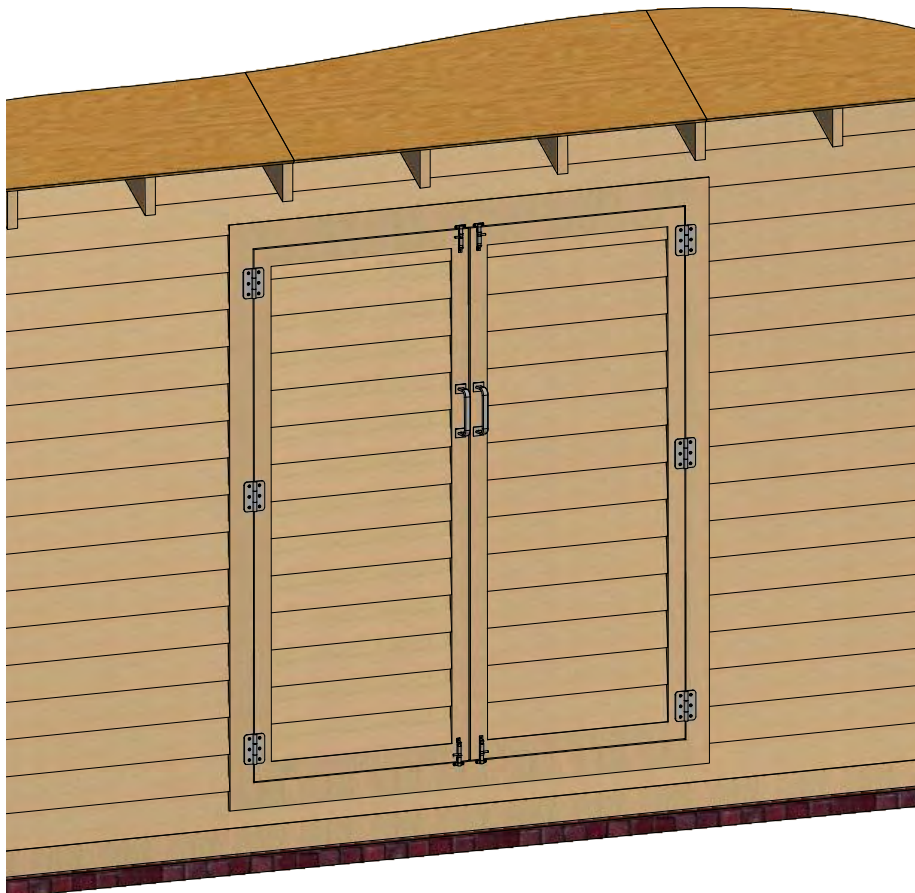
6.4 Connect the beams with 2x3" flat head Phillips wood screws.



STEP 7

Assemble and Install Shed Doors

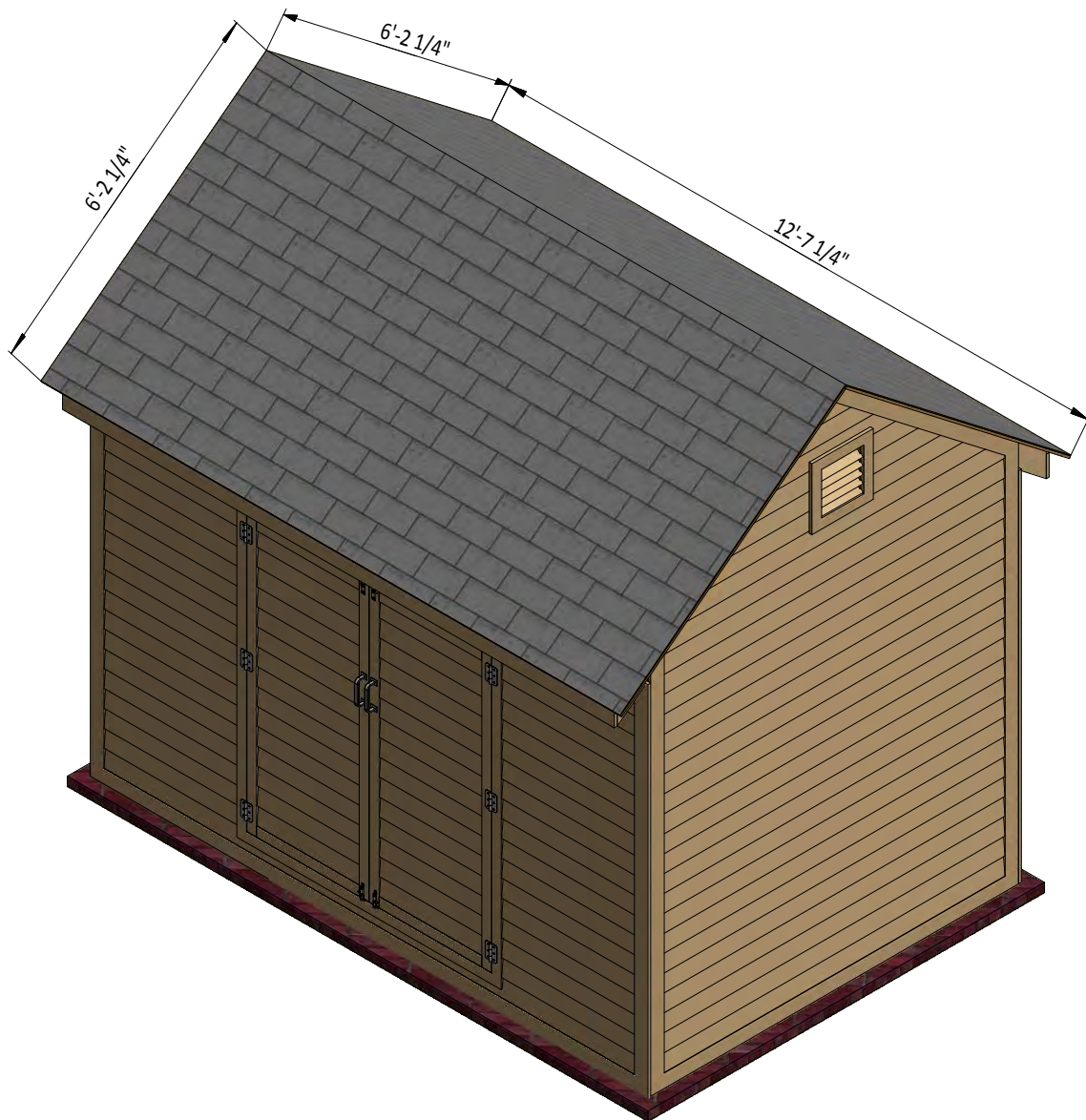
- 7.1** Build the door frames for the shed using 1 1/2 " x 3 1/2 " treated lumber and secure with 5" flat head wood screws. You will need two boards cut to 5'-11 3/4" for the vertical girts and two boards cut to 2'-3/4" for the horizontal girts.
- 7.2** Cut two doors from the 9/16" plywood sheet with dimensions 2'-7 3/4" x 5'-11 3/4" according to the drawing.
- 7.3** Use 2 1/2 " x 3/4 " treated lumber to make the door trim and fasten with 2" Phillips flat head wood screws. You will need two boards cut to 2'-2 3/4" and two boards cut to 5'-11 3/4".
- 7.4** Using 1/4 " x 3/4 " treated lumber, cut and install a starter course 2'-2 3/4" long.
- 7.5** Use 1/2 " x 6" wood siding boards for the door and the illustration below as a reference.
- 7.6** Assemble siding shields with 2" galvanized nails.
- 7.7** Install three 3" door hinges using 6x1" wood screws. Finish the door installation by attaching 4" surface bolts and 6" door pulls.



STEP 8

Roof Sheathing Installation

- 8.1 This storage shed requires 160 Sq Ft of asphalt shingle roofing.
- 8.2 Add the metal drip edge to the fascias.
- 8.3 Cover the plywood with roofing paper.
- 8.4 Install asphalt shingle roofing using an industrial stapler or use a hammer with roofing nails.



STEP 9

Shed Decoration

Now that your coop is all done, you are ready to decorate it any way you want using your favorite paint, stain, or preservative.





For more great **HOW-TO** plans please visit: www.howtoplans.org

Copyright

The text and illustrations that appear here are the exclusive property of howtoplans.org and are protected by federal copyright laws. The duplication, sale or distribution of any portion of these plans without prior written consent from the original designer will be subject to the appropriate penalties for copyright infringement. Sharing this plan on the web is only permitted with an indicated original source: <https://www.howtoplans.org>