



14'x8' Garden Shed Plan

Disclaimer

The information provided here will show you how to build a shed. However, howtoplans.org does not claim that the recommended techniques are the only way to accomplish this task. It will be the responsibility of each customer to ensure the application of the correct construction methods and the use of the proper materials.

In addition to the selection of the materials, the customer will be responsible for such construction tasks as caulking, flashing, gluing, insulating, and nailing, and for adequate workmanship in the areas of installation, roofing and weatherproofing, as well as for any other skills that are beyond the control of the designer. The materials mentioned in the plans do not represent an endorsement or recommendation of any particular product.

The Responsibility of Users

Despite our commitment to presenting accurate information, howtoplans.org is not liable for any errors or omissions appearing in the plans. Furthermore, howtoplans.org will not be liable for any consequential, special, incidental or indirect damages resulting from the use of this information. Our freedom from liability also extends to such issues as the loss of anticipated profits or business opportunities, and economic losses stemming from the use of howtoplans.org, regardless of whether there has been notification of such damage.

Liability

Those who utilize the methods described on howtoplans.org will be responsible for their own actions. We are not liable for any injuries or property damage that may arise from the use of the information appearing on this website. If you decide to use these plans, you should use only quality materials and should always follow good safety practices. In the event that you are unable to complete the project on your own, you should contact a certified contractor to ensure that construction is completed in accordance with the highest standards.

Permissions

It is important to understand that planning and permission issues are dependent upon local requirements. Users of these plans are responsible for complying with the appropriate statutes and regulations, and for the proper implementation of the plans or other construction information provided by howtoplans.org. The city or county office in your area should be able to provide you with the relevant information.

Copyright

The text and illustrations that appear here are the exclusive property of howtoplans.org and are protected by federal copyright laws. The one-time use of the plans is limited to anyone who purchases them. The duplication, publication, sale or distribution of any portion of these plans without prior written consent from the original designer will be subject to the appropriate penalties for copyright infringement.

14'x8' Garden Shed Material List

Site Preparation

- Concrete
- Bricks

Bottom Frame

- Pressure-Treated Lumber
- Plywood

Wall Frames

- Pressure-Treated Lumber

Shed's Roof

- Pressure-Treated Lumber
- Pressure-Treated Board
- Plywood
- Building paper
- Asphalt shingles
- Metal drip edge

Front Shed's Windows

- Pressure-Treated Lumber
- Window beading
- Glass

Shed's Door

- Pressure-Treated Lumber
- Window beading
- Glass

Walls Exterior Siding

- Pressure-Treated Lumber
- Wood siding boards

Top Frame

- Pressure-Treated Lumber

Fasteners & Hardware

- Door hinges
- Door lock
- Corner braces
- Galvanized nails
- Wood screws

Shed's Window

- Pressure-Treated Lumber
- Window beading
- Glass

STEP 1

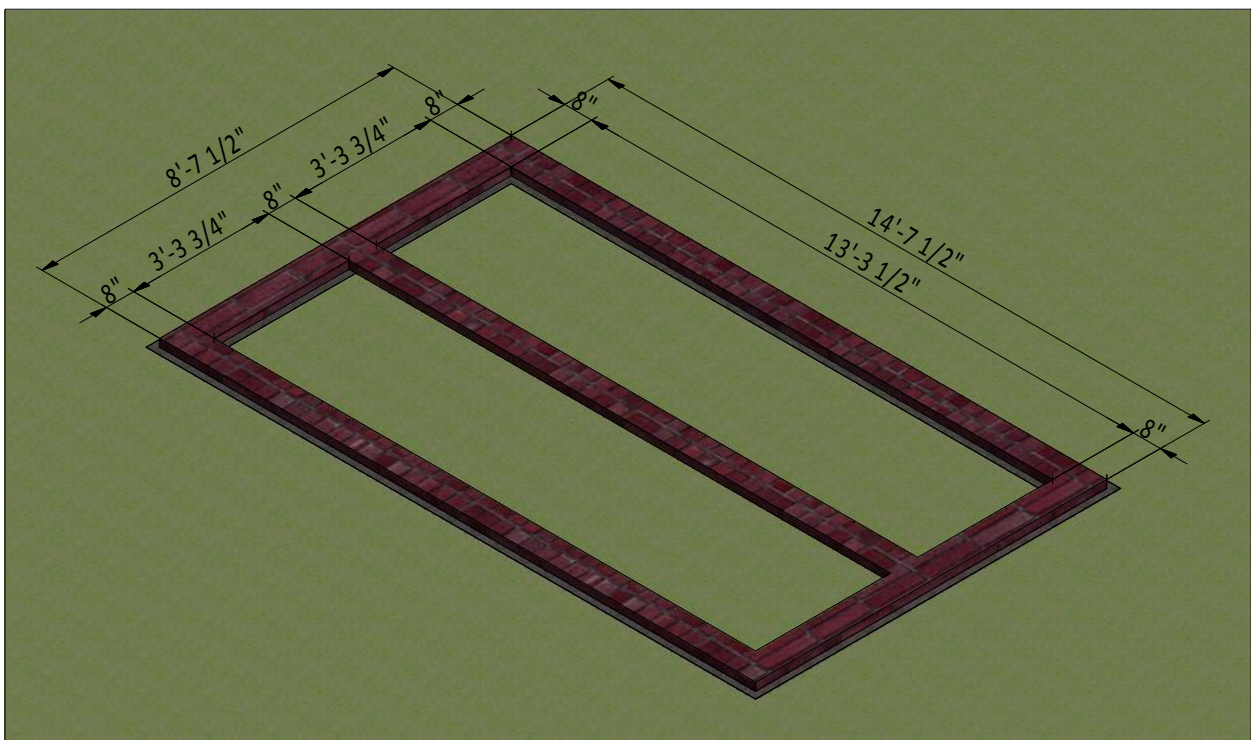
Foundation Preparation

1.1 Clear the area where you want to build the shed and layout for the foundation. Use the below illustration as a guide.

1.2 For the foundation, dig the trenches at least 1 feet wide and 1 feet deep.

1.3 Fill the trenches to ground level with concrete and let cure, or harden. Since curing times vary between brands, read the packaging for recommended curing times.

1.4 Once the concrete has cured, use standard-sized bricks and lay them across the foundation. You will need roughly 150 bricks for this step.



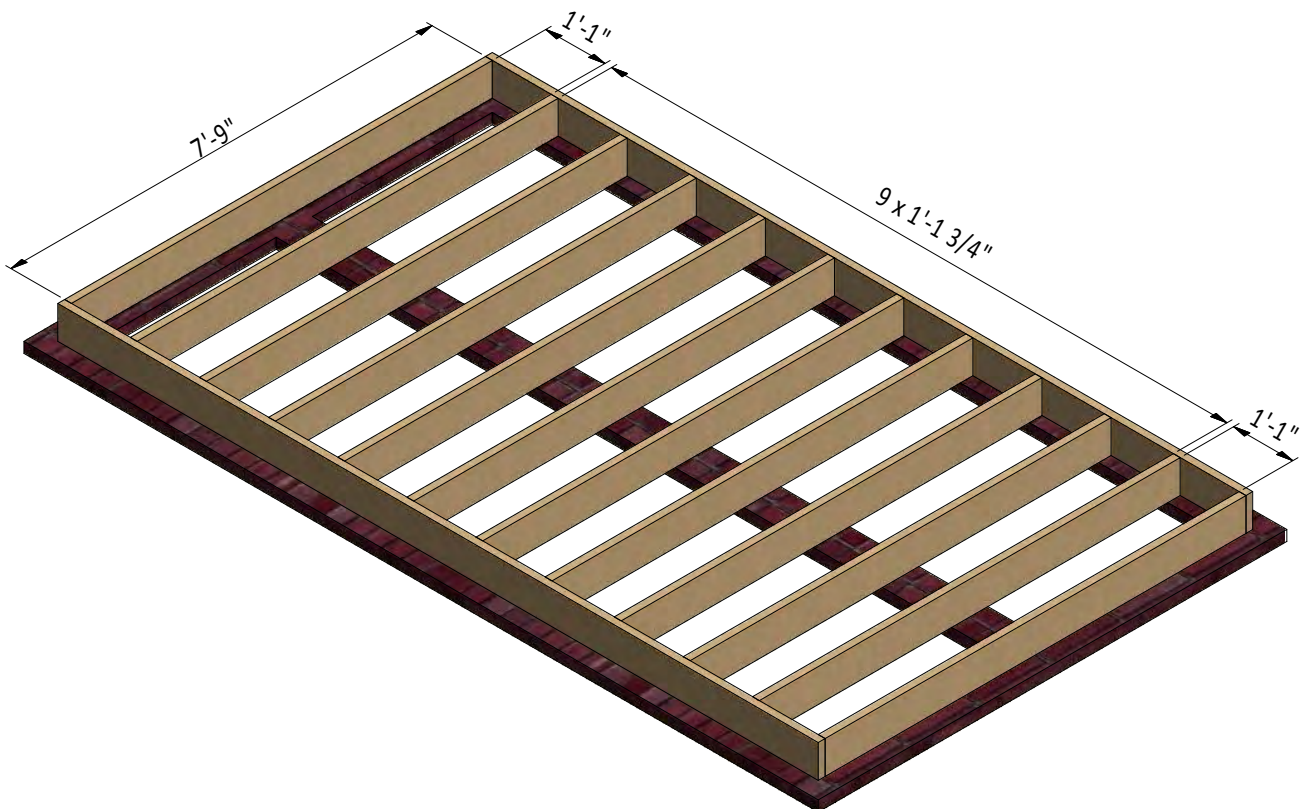
STEP 2

Framing the Floor

2.1 Assemble the frame using $1\frac{1}{2}$ " x $7\frac{1}{4}$ " pressure-treated lumber. You will need ten boards cut to 7'-9" that will be the joist.

2.2 Secure the beams with 8x5" wood screws.

2.3 Using a speed square or carpenter's square, check the corners to make sure they are 90°.



STEP 3

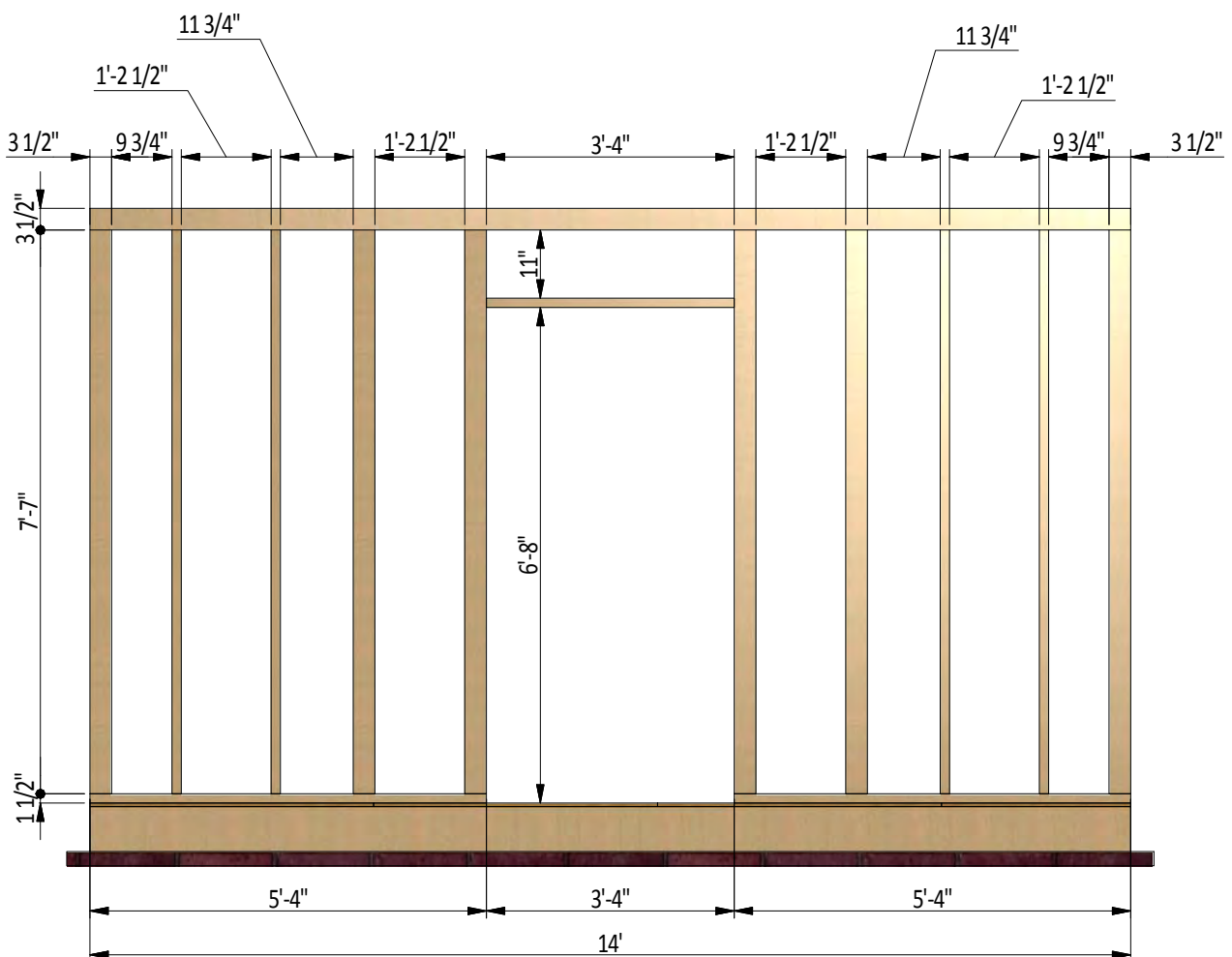
Assemble Front Wall Frame

3.1 Using 1 1/2" x 3 1/2" and 3 1/2" x 3 1/2" pressure-treated lumber, construct front wall frame using the drawing below as a reference. You will need one board cut to 3'-4" that will be the door header, ten boards cut to 7'-7" that will be the studs, two boards cut to 5'-4" that will be the bottom plates and one board cut to 14' that will be the top plate.

3.2 Connect the beams with 2x4" and 2x5" wood screws.

3.3 Using 3/4" x 3 1/2" pressure-treated board provide front wall top plates. Cut two boards 14' long and connect them with 8x2" wood screws from the both sides of the top beams.

3.4 Using a speed square or carpenter's square, check the corners to make sure they are 90°.



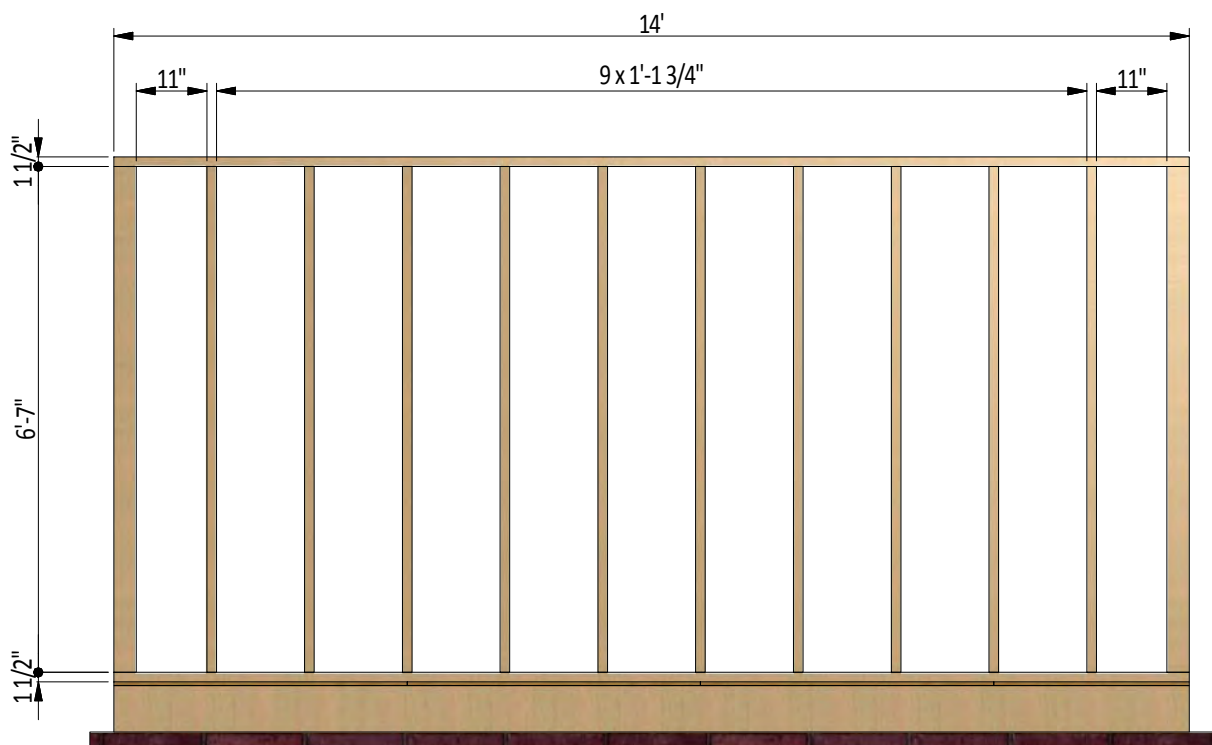
STEP 4

Assemble Back Wall Frame

4.1 Using 1 1/2" x 3 1/2" and 3 1/2" x 3 1/2" pressure-treated lumber, construct back wall frame using the drawing below as a reference. You will need twelve boards cut to 6'-7" that will be the studs and two boards cut to 14' that will be the top and bottom plates.

4.2 Connect the beams with 2x4" wood screws.

4.3 Using a speed square or carpenter's square, check the corners to make sure they are 90°.



STEP 5

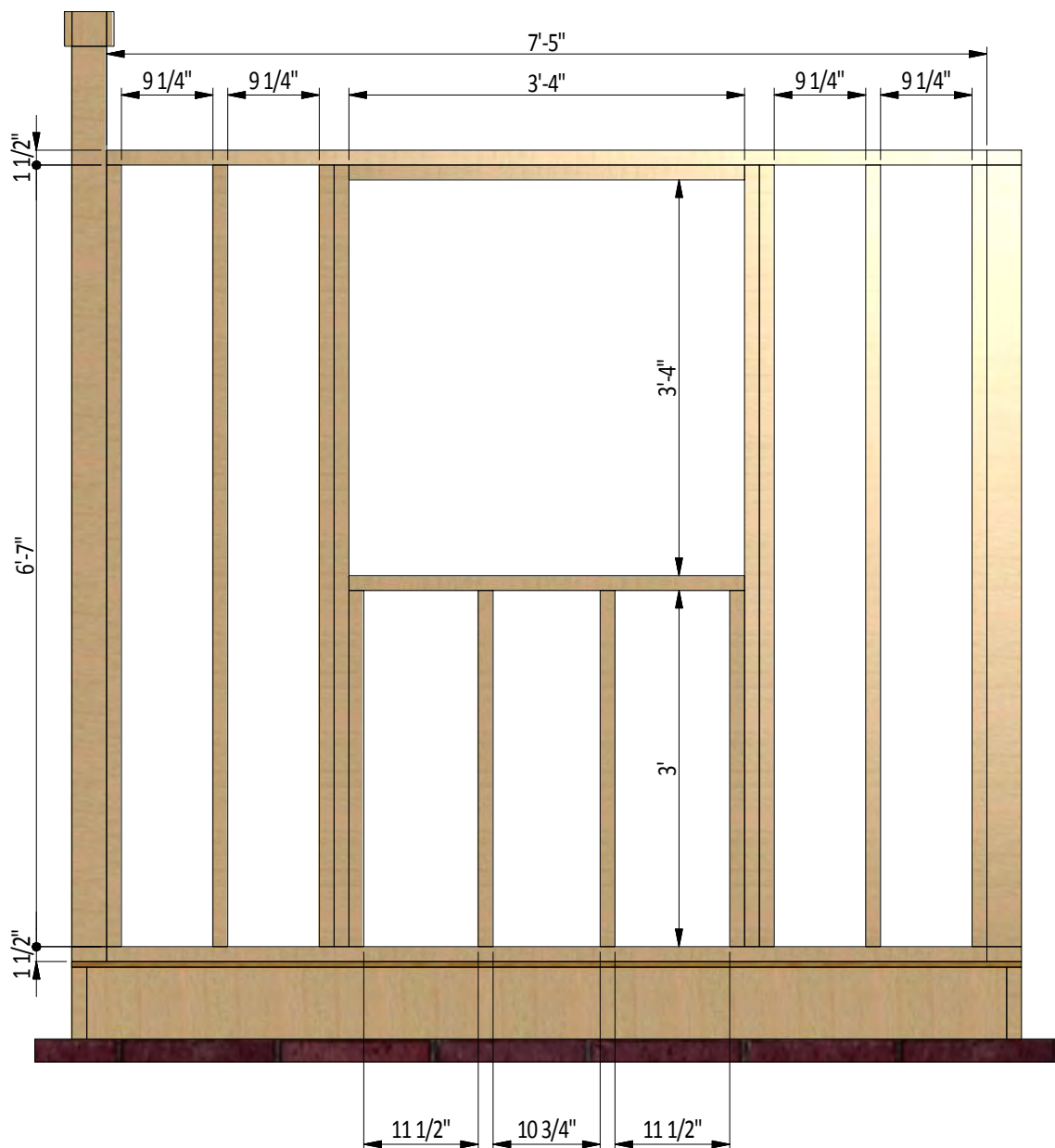
Assemble Side Wall Frames

5.1 Using 1 1/2" x 3 1/2" pressure-treated lumber, construct side wall frames using the drawing below as a reference.

You will need four boards cut to 3' that will be the studs, two boards cut to 3'-4" that will be the window header and rough sill, eight boards cut to 6'-7" that will be the studs and two boards cut to 7'-5" that will be the top and bottom plates.

5.2 Connect the beams with 2x4" wood screws.

5.3 Using a speed square or carpenter's square, check the corners to make sure they are 90°.

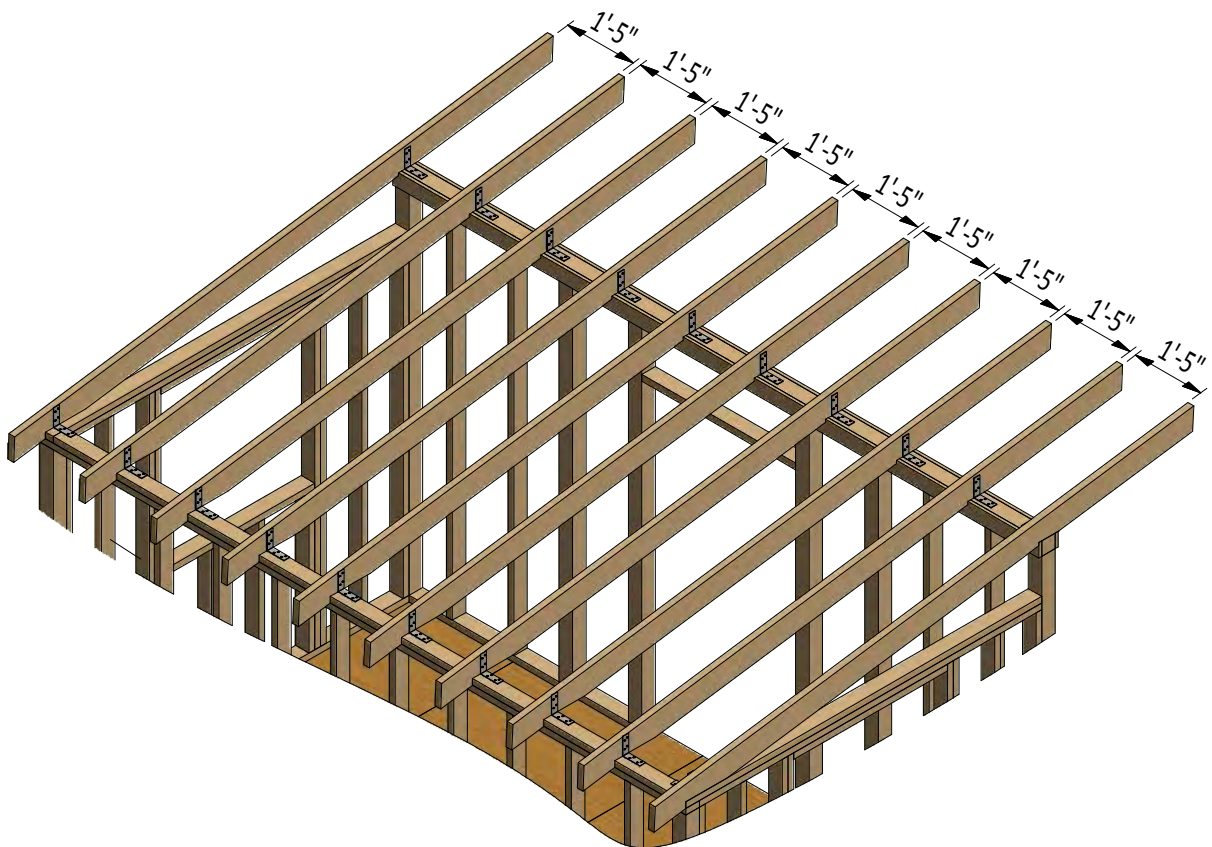


STEP 6

Assemble The Roof Frame

6.1 Using 1 1/2 " x 5 1/2 " pressure-treated lumber, cut ten rafters 11'-10 1/2" long according to the dimensions in drawing below. Cut the recesses in each beam for splicing connection with wall frames.

6.2 Connect the beams with a top frame with the help of 1 1/2" x 1 1/2" x 4 1/2" corner braces and 1" wood screws.



STEP 7

Door Installation for the Front Wall

7.1 Using 1 1/2 " x 3 1/2 " and 1 1/2 "x 7 1/4" pressure-treated lumber, assemble the frame for the door as shown in the drawings below. You will need three boards cut to 6'-8" that will be the studs and two boards cut to 3'-3 1/2" that will be the top and bottom girts. Cut the recesses for splicing connection.

7.2 Additionally, add three horizontal supports 3'-3 1/2" long using 1 1/2" x 1 1/2" lumber and cut the recesses for the glass.

7.3 Connect the beams with 1" wood screws.

7.4 Cut the recesses for the 4" x 1" hinges.

7.5 Mill the recess for the locking clamp in the door opening left beam and recess for the lock with handles in the door according to the door lock set documentation that you have to buy.

7.6 Install two hinges (4") with 1" wood screws and assemble the doors. Install door lock set.

7.7 Prepare and install glass and fasten it by window beading from four sides. Use 1/2" galvanized nails.



STEP 8

Window Installation for Left Wall

8.1 Using 1 1/2 " x 2 1/2 " pressure-treated lumber, assemble the outer frame for the window as shown in the drawing below. You will need two boards cut to 3'-1" that will be the vertical girts and two boards cut to 3'-4" that will be the horizontal girts. Additionally, add vertical 2'-11 1/2" long and horizontal 3'-1" long supports using 3/4" x 1" lumber and cut the recesses for the window hinges.

8.2 Use 1 1/2 " x 1 1/2 " pressure-treated material to make the inner frame and secure with 3" wood screws. You will need two boards cut to 2'-9 3/4" that will be the vertical girts and two boards cut to 3'-3/4" that will be the horizontal girts. Mill a recess for the glass panes and for the hinges.

8.3 Use 1 1/4 " x 1 1/2 " pressure-treated material to make the inner frame supports and secure with 3" wood screws. You will need two boards cut to 2'-9 3/4" and mill a recess for interconnection.

8.4 Prepare and install glass into inner frame groove and fasten it by window beading from four sides. Use 1/2" galvanized nails.

8.5 Install two hinges (3") with 6x1" wood screws and assemble the window. Install a lock on the inner side of the window.



STEP 9

Assemble and Install Window Shutters

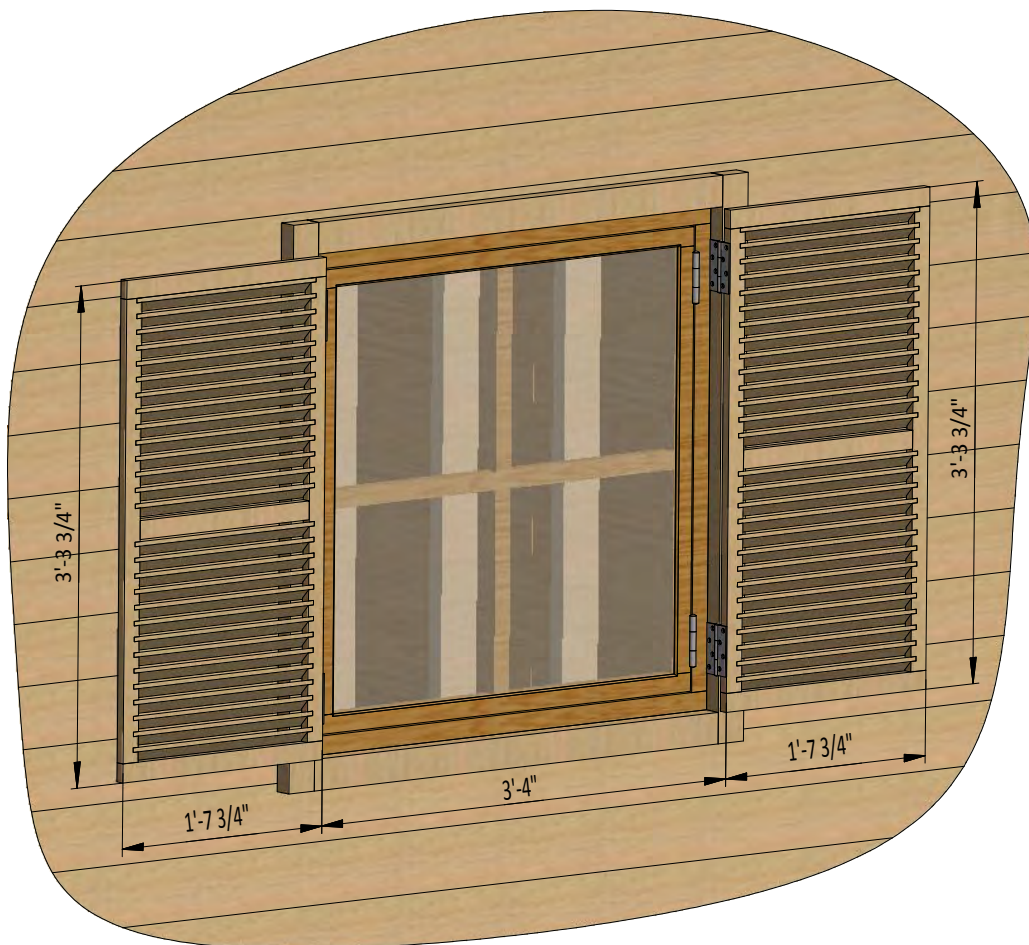
It is necessary to prepare 2 windows shutters.

9.1 Assemble frames using $\frac{3}{4}$ " x $1\frac{1}{2}$ " pressure-treated lumber and secure with 3" wood screws. You will need one board cut to $1'-4\frac{3}{4}"$ two boards cut to $3'-3\frac{3}{4}"$ that will be the vertical girts and two boards cut to $1'-7\frac{3}{4}"$ that will be the horizontal girts.

9.2 Mill a recess along the vertical girts for the jalousies.

9.3 Use $\frac{1}{4}$ " x $1\frac{1}{2}$ " pressure-treated lumber for the jalousies. You will need twenty two boards cut to $1'-5\frac{3}{4}"$.

9.4 Install two 3" door hinges using 6x1" wood screws.



STEP 10

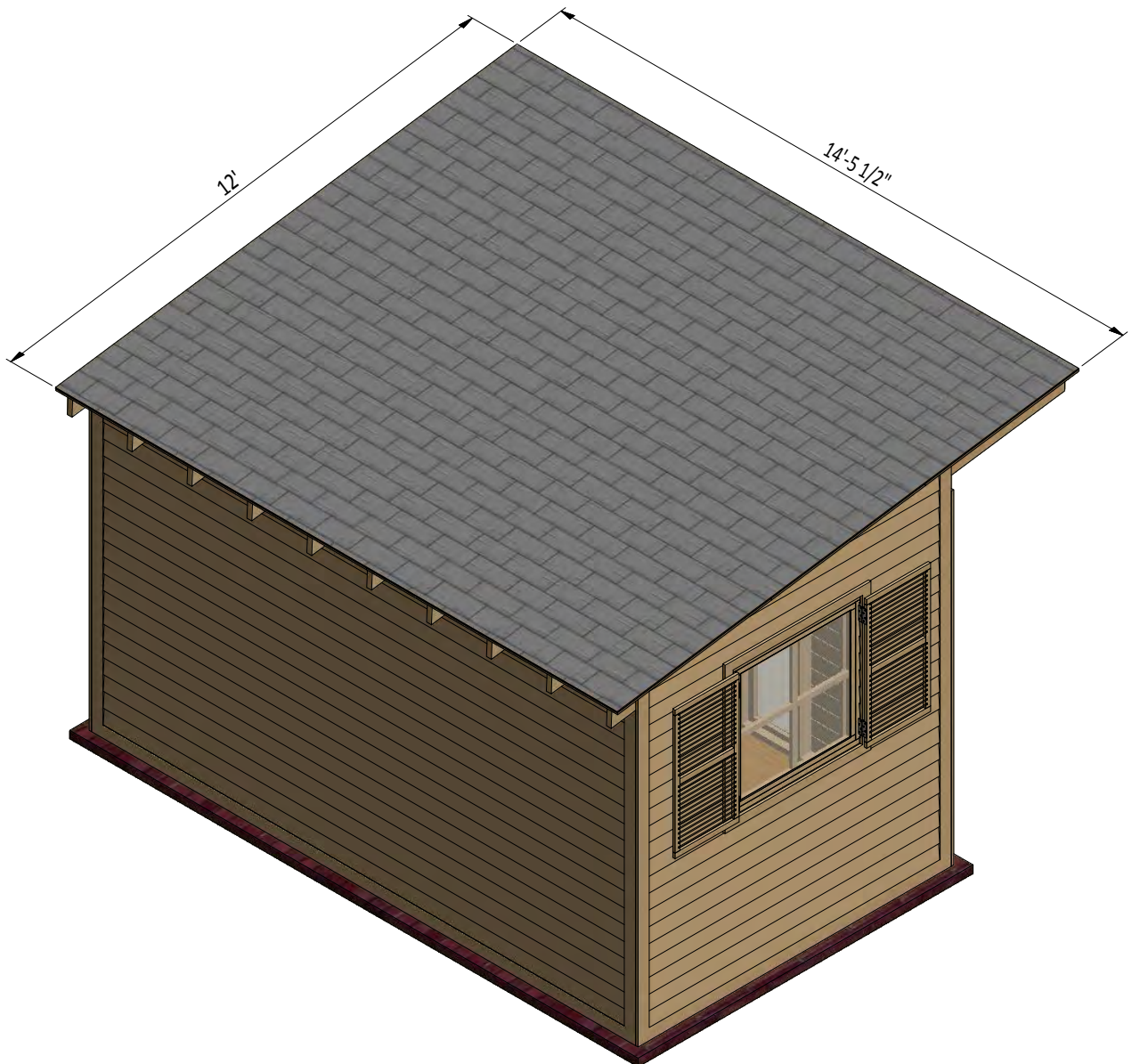
Roof Sheathing Installation

10.1 You will need 180Sq Ft of asphalt shingle roofing.

10.2 Add the metal drip edge to the fascias.

10.3 Cover the plywood with building paper.

10.4 Install asphalt shingle roofing using an industrial stapler.



STEP 11

Shed Decoration

Now that your coop is all done, you are ready to decorate it any way you want using your favorite paint, stain, or preservative.





For more great **HOW-TO** plans please visit: www.howtoplans.org

Copyright

The text and illustrations that appear here are the exclusive property of howtoplans.org and are protected by federal copyright laws. The duplication, sale or distribution of any portion of these plans without prior written consent from the original designer will be subject to the appropriate penalties for copyright infringement. Sharing this plan on the web is only permitted with an indicated original source: <https://www.howtoplans.org>