



10'x16' Storage Shed Plan

Disclaimer

The information provided here will show you how to build a chicken coop. However, we at howtoplans.org do not claim that the recommended techniques are the only way to accomplish this task. It will be the responsibility of each customer to ensure the application of the correct construction methods and the use of the proper materials.

In addition to the selection of the materials, the customer will be responsible for such construction issues as caulking, flashing, gluing, insulating and nailing, for ensuring adequate workmanship in the areas of installation, roofing and weatherproofing, and for any other items that are beyond the control of the designer. The materials mentioned in the plans do not represent an endorsement or recommendation of any particular product.

The Responsibility of Users

Despite our commitment to presenting accurate information, howtoplans.org is not liable for any errors or omissions appearing in the plans. Furthermore, howtoplans.org will not be liable for any consequential, special, incidental or indirect damages resulting from the use of this information. Our freedom from liability also extends to such issues as the loss of anticipated profits or business opportunities, and economic losses stemming from the use of howtoplans.org, regardless of whether there has been notification of such damage.

Liability

Those who utilize the methods described on howtoplans.org will be responsible for their own actions. We are not liable for any injuries or property damage that may arise from the use of the information appearing on this website. If you decide to use these plans, you should employ only quality materials and should always adhere to good safety practices. In the event that you are unable to complete the project on your own, you should contact a certified contractor to ensure that construction is completed with the highest standards.

Permissions

It is important to understand that planning and permission issues are dependent upon local requirements. Users of these plans are responsible for complying with the appropriate statutes and regulations, and for the proper implementation of the plans or other construction information provided by howtoplans.org. The city or county office in your area should be able to provide you with the relevant information.

Copyright

The text and illustrations that appear here are the exclusive property of howtoplans.org and are protected by federal copyright laws. The one-time use of the plans is limited to anyone who purchases them. The duplication, publication, sale or distribution of any portion of these plans without prior written consent from the original designer will be subject to the appropriate penalties for copyright infringement.

10'x16' Storage Shed Plan Material List

Site Preparation

- Concrete
- Bricks

Bottom Frame

- Pressure-Treated Lumber
- Plywood

Wall Frames

- Pressure-Treated Lumber

Shed's Roof

- Pressure-Treated Lumber
- Pressure-Treated Board
- Plywood
- Building paper
- Asphalt shingles
- Metal drip edge

Shed's Door

- Pressure-Treated Lumber
- Wood siding boards
- Plywood

Walls Exterior Siding

- Pressure-Treated Lumber
- Wood siding boards

Top Frame

- Pressure-Treated Lumber

Fasteners & Hardware

- Door hinges
- Door pulls
- Surface bolt
- Galvanized nails
- Wood screws

STEP 1

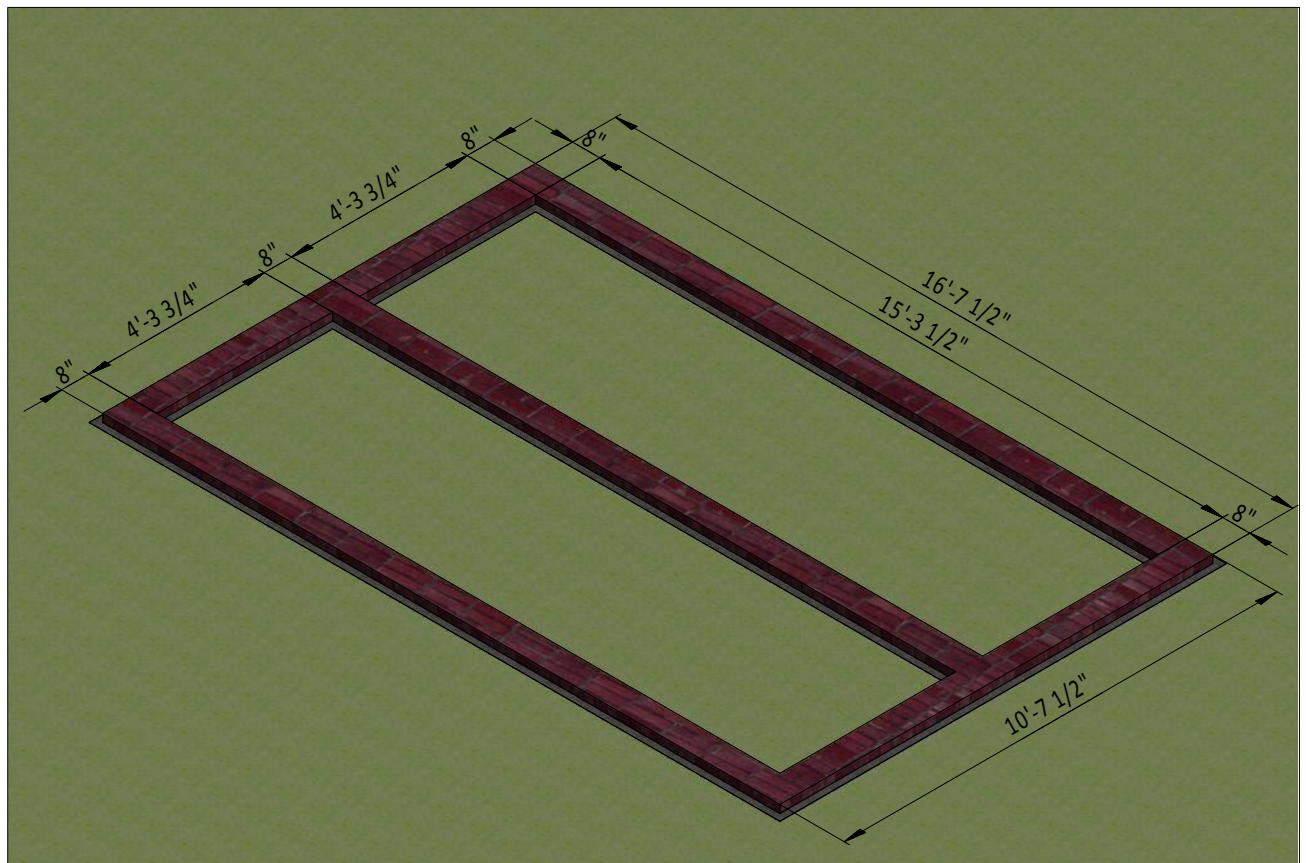
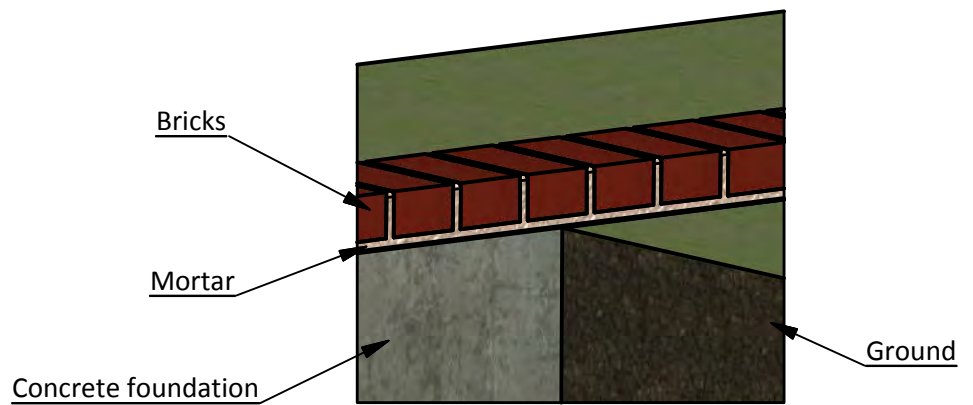
Foundation Preparation

1.1 Clear the area where you want to build the shed and layout for the foundation. Use the below illustration as a guide.

1.2 For the foundation, dig the trenches at least 1' wide and 1' deep.

1.3 Fill the trenches to ground level with concrete and let cure, or harden. Since curing times vary between brands, read the packaging for recommended curing times.

1.4 Once the concrete has cured, use standard-sized bricks and lay them across the foundation. You will need roughly 200 bricks for this step.



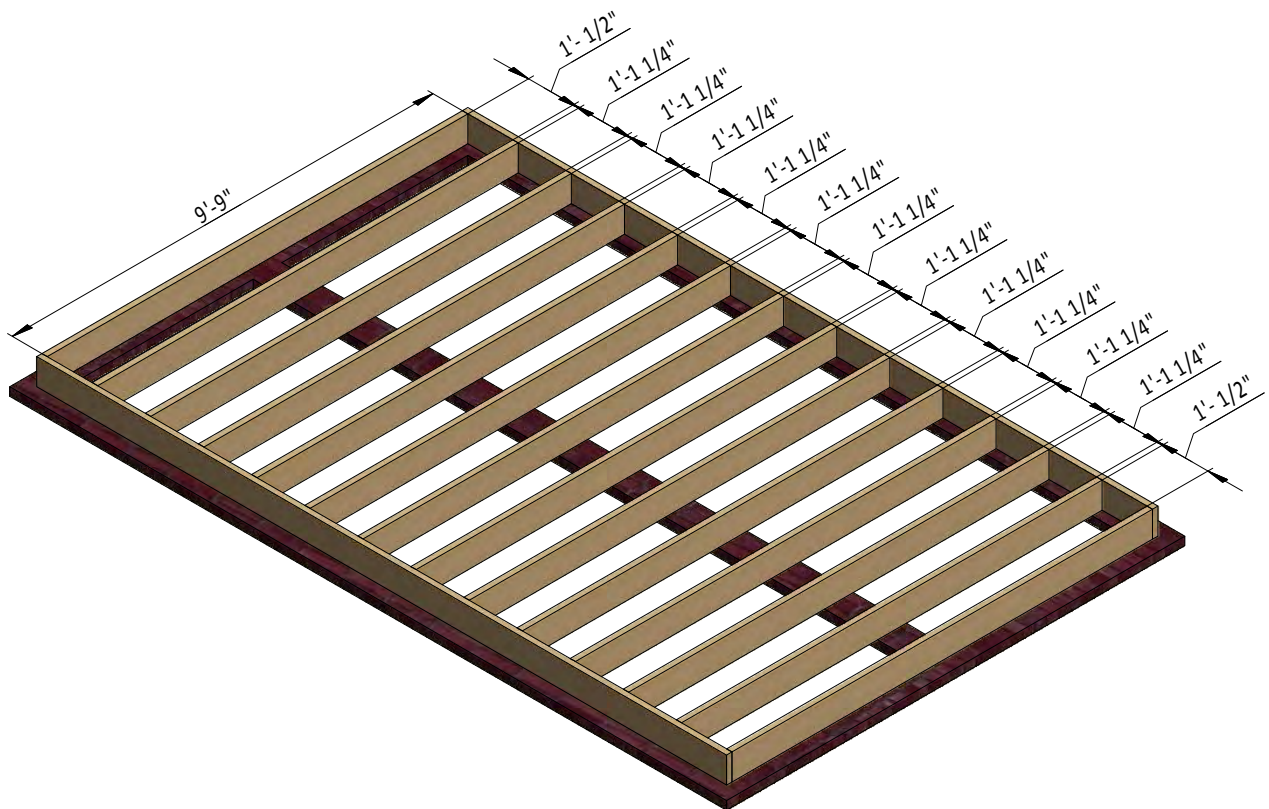
STEP 2

Framing the Floor

2.1 Assemble the frame using 1 1/2" x 7 1/4" treated lumber. You will need 12 boards cut to 9'-9" that will be the floor joists.

2.2 Use 8x5" flat head Phillips wood screws to secure the joists.

2.3 Check the corners with a square to make sure they are 90°.



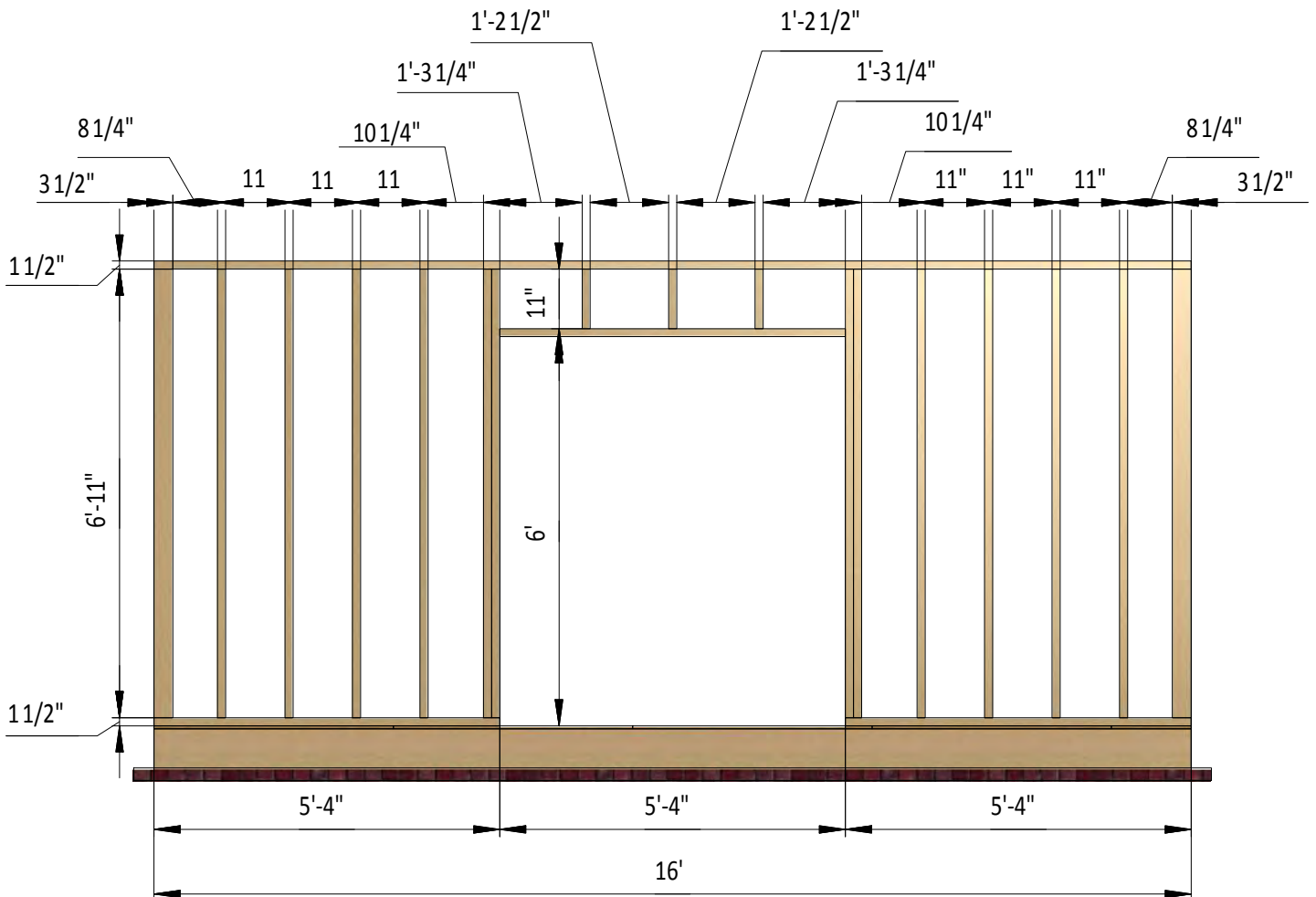
STEP 3

Assemble Front Wall Frame

3.1 Using 1 1/2" x 3 1/2" and 3 1/2" x 3 1/2" treated lumber, construct the front wall frame. using the drawing below as a guide. You will need three boards cut to 11" for the cripple studs, be the cripple studs, one board cut to 5'-4" for the door header, 14 boards cut to 6'-11" 6'-11" for the studs, two boards cut to 5'-4" for the bottom plates and one board cut to 16' for the top plate for the garden or storage shed.

3.2 Join the beams with 2x4" flat head Phillips wood screws.

3.3 Using the square of your choice, check the corners to make sure they are all 90°.



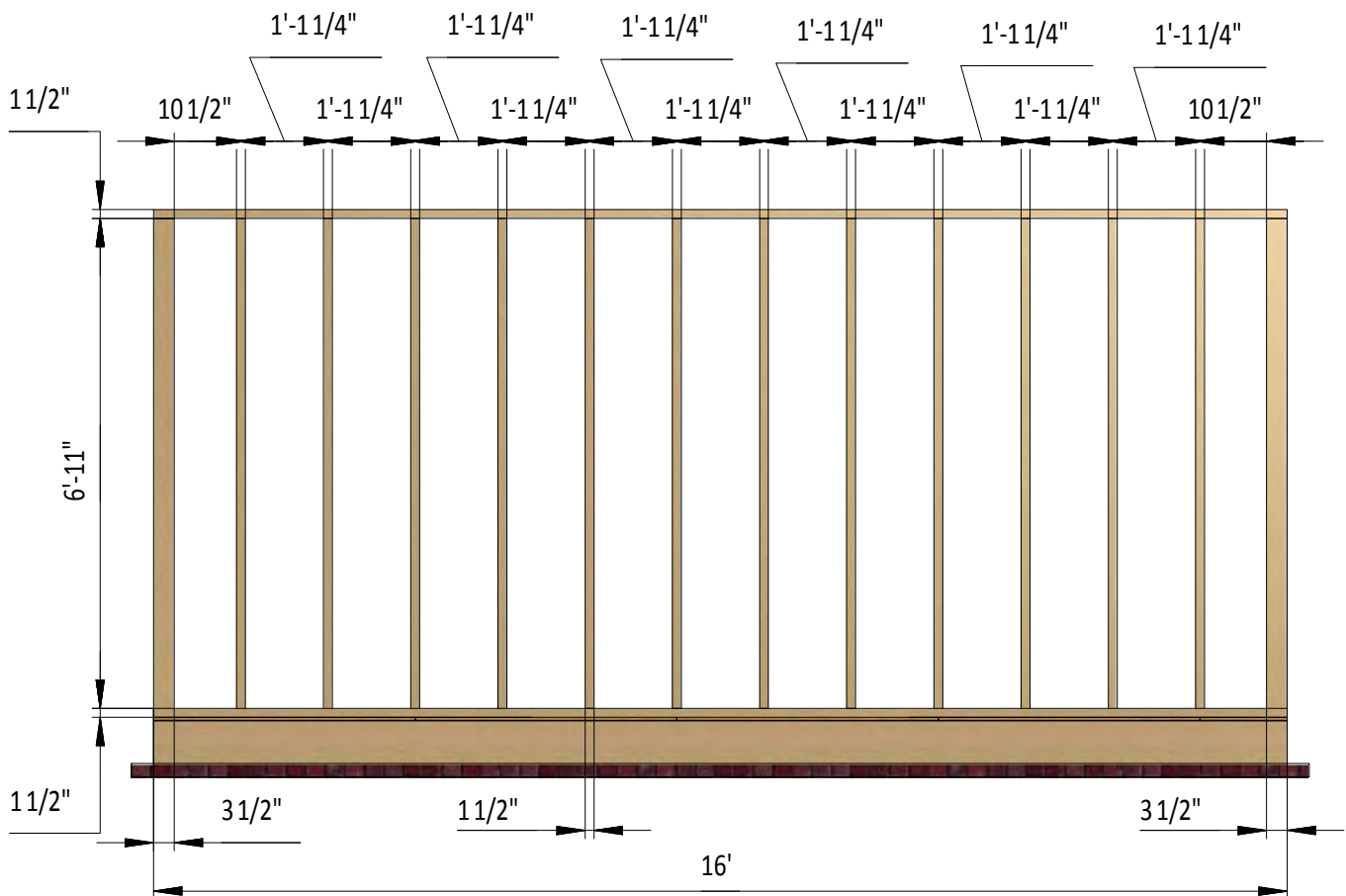
STEP 4

Assemble Back Wall Frame

4.1 Using 1 1/2" x 3 1/2" and 3 1/2" x 3 1/2" pressure-treated lumber, build the back wall frame using the illustration below as a guide. You will need 14 boards cut to 6'-11" that will be the studs and two boards cut to 16' that will be the top and bottom plates.

4.2 Use 2x4" wood screws to connect the beams.

4.3 Using a square, check the corners to make sure they are 90°.



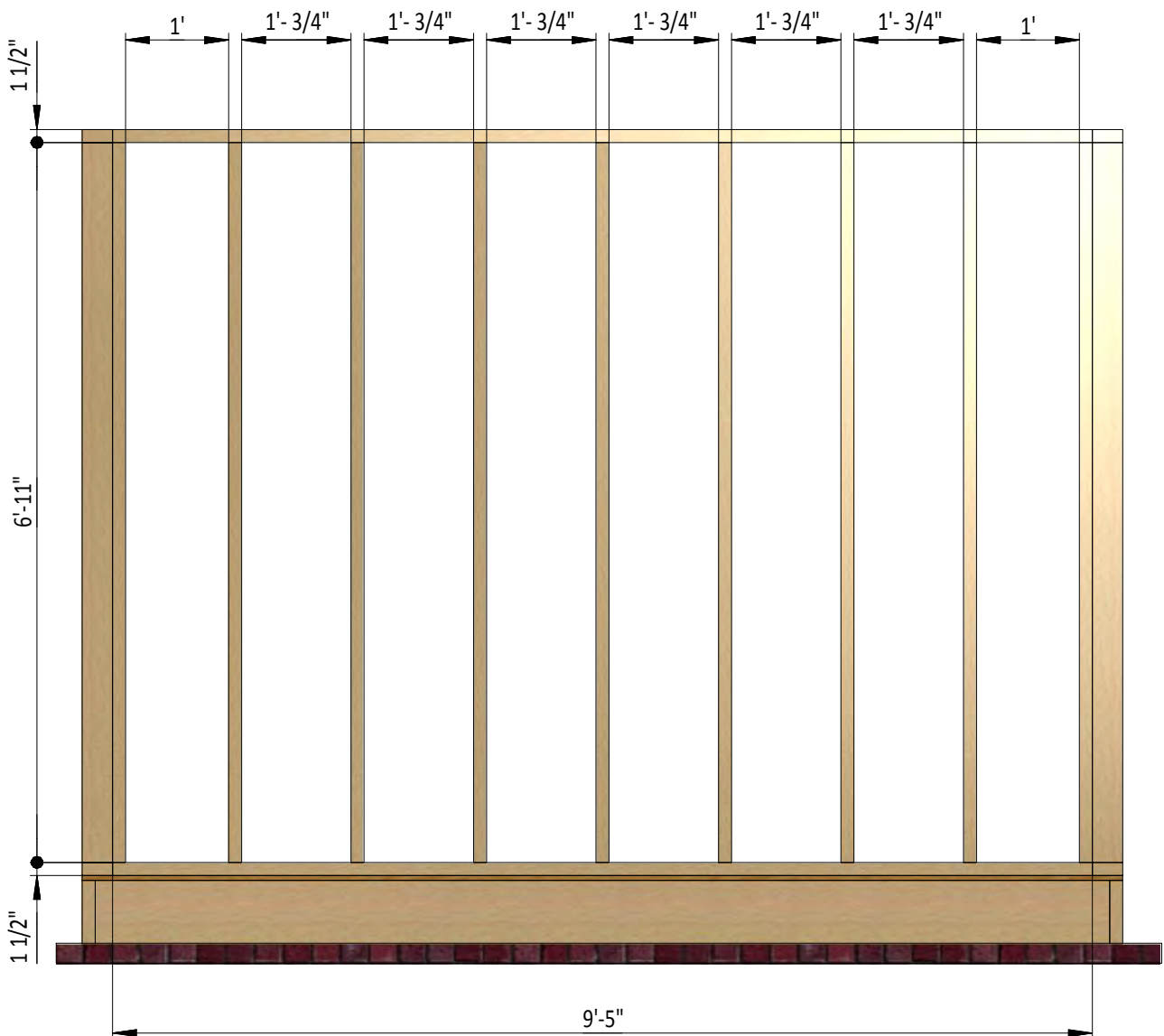
STEP 5

Assemble Left and Right Wall Frames

5.1 Using 1 1/2" x 3 1/2" pressure-treated lumber, construct the wall frames using the drawing below as a guide. You will need nine boards cut to 6'-11" for the wall studs and two boards that are 9'-5" for the top and bottom plates.

5.2 Connect the beams with 2x4" wood screws.

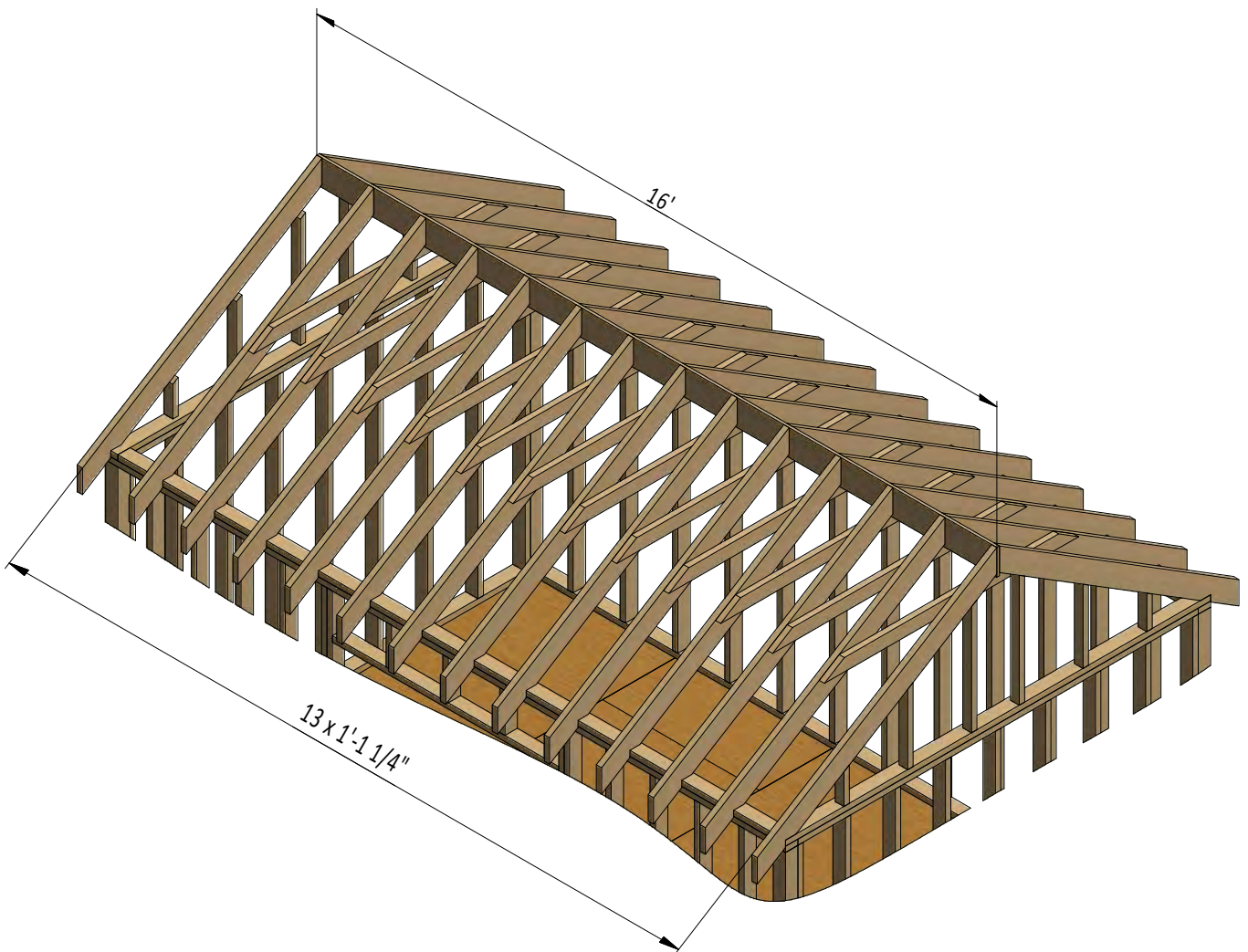
5.3 Using the square of your choice, check the corners to verify that they are 90°.



STEP 6

Assemble the Roof Frame

- 6.1 Using 1 1/2 " x 5 1/2 " pressure-treated lumber, cut 28 rafters 6'-11" long according to the dimensions.
- 6.2 Using 1 1/2 " x 3 1/2 " pressure-treated lumber, cut twelve collar ties 5'-11 3/4" long according to the dimensions.
- 6.3 Using 3/4 " x 7 1/4 " pressure-treated board, cut the ridge board 16' long as shown below.
- 6.4 Connect the beams with 2x3" Phillips flat head wood screws.

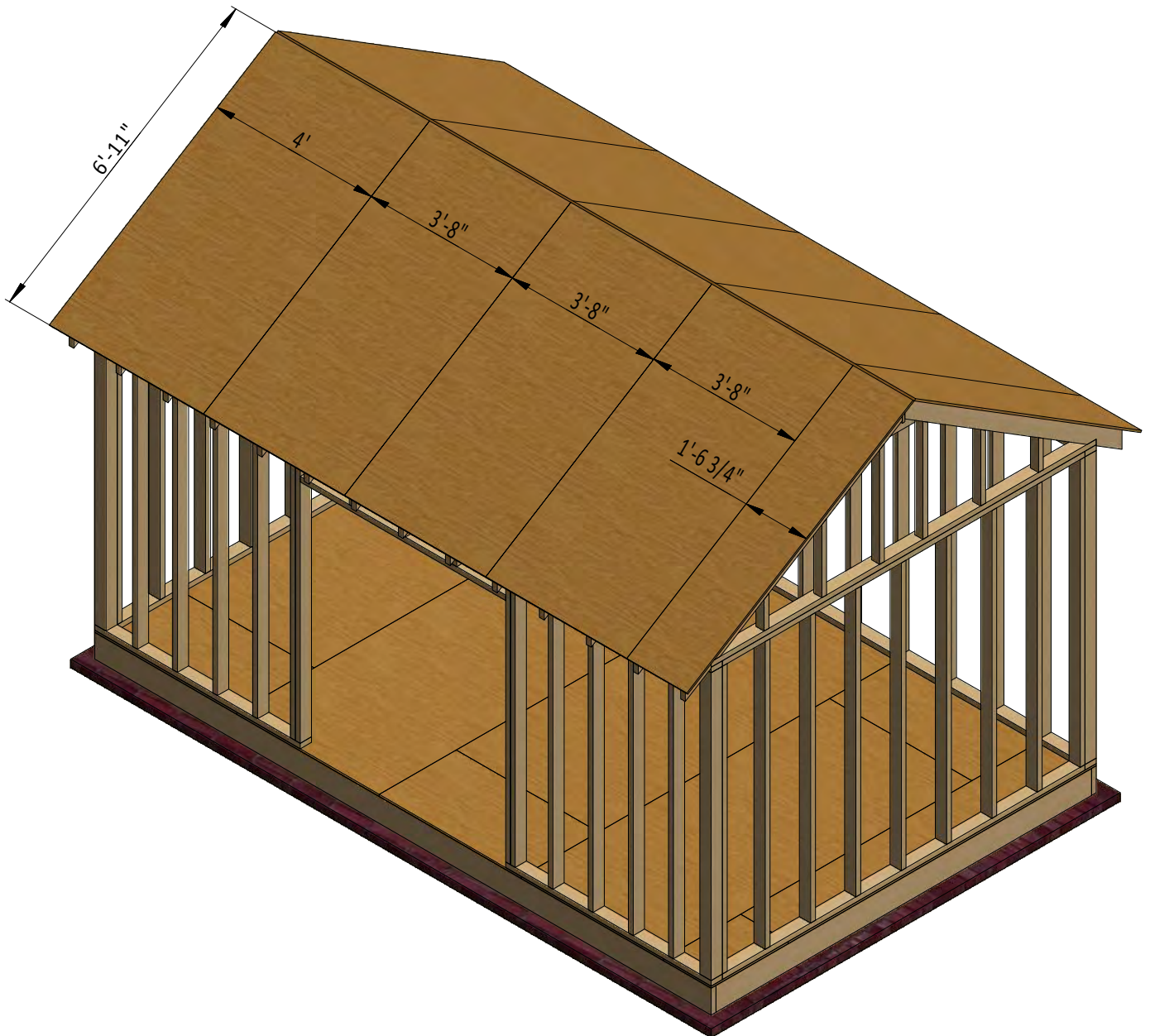


STEP 7

Install Plywood for the Roof

7.1 Cut sheets of 9/16" plywood for the roof decking using the drawing below as a layout guide. You will need to cut two 4' x 6'-11" sheets, six 3'-8" x 6'-11" sheets and two 1'-6 3/4" x 6'-11" sheets.

7.2 Secure the plywood with 2" flat head Phillips wood screws.



STEP 8

Assemble and Install Shed Doors

8.1 Build the door frames for the shed using 1 1/2 " x 3 1/2 " treated lumber and secure with 5" Phillips wood screws. You will need two boards cut to 5'-11 3/4" that will be the vertical girts and two boards cut to 2'-3/4" that will be the horizontal girts.

8.2 Cut the 9/16" plywood sheet into pieces that measure 2'-7 3/4" x 5'-11 3/4" for the doors as the drawing indicates.

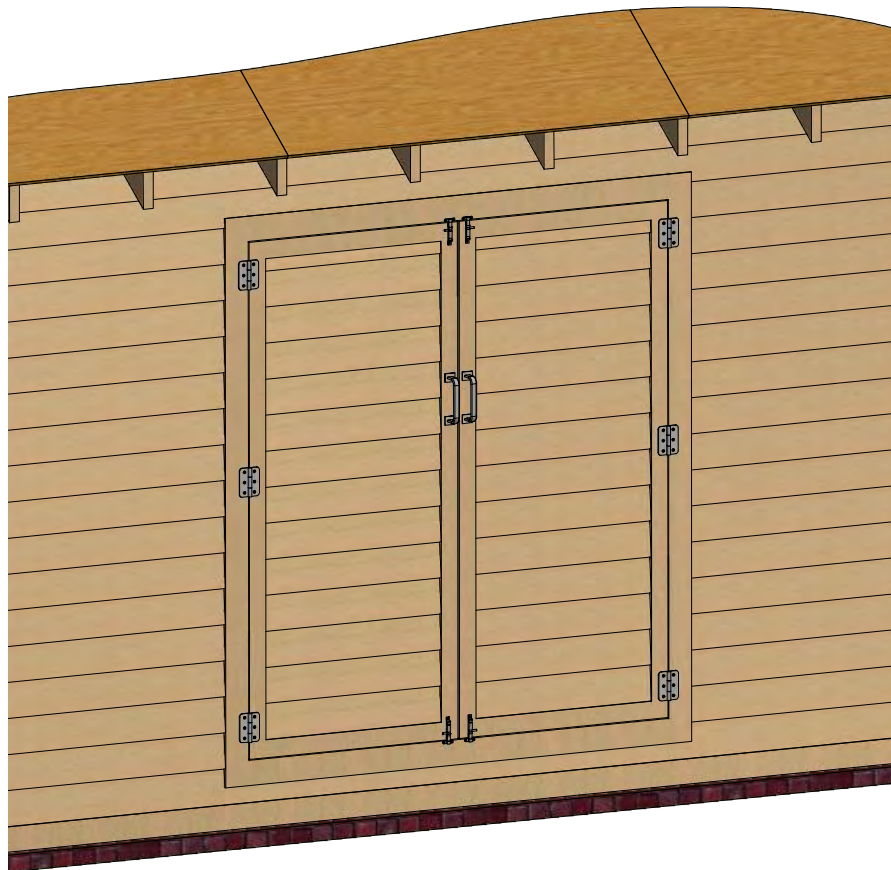
8.3 Use 2 1/2 " x 3/4 " pressure-treated lumber for the door trim and fasten with 2" flat head wood screws. You will need two boards cut to 2'-2 3/4" and two boards cut to 5'-11 3/4".

8.4 Using 1/4 " x 3/4 " pressure-treated lumber, cut and install a starter course 2'-2 3/4" long .

8.5 For the exterior siding on the door, use 1/2 " x 6" wood siding boards. Refer to the illustration below as a guide.

8.6 Assemble siding shields using 2" galvanized nails.

8.7 Install three 3" door hinges using 6x1" wood screws. Finish the installation of the doors by attaching 4" surface bolts and 6" door pulls.



STEP 9

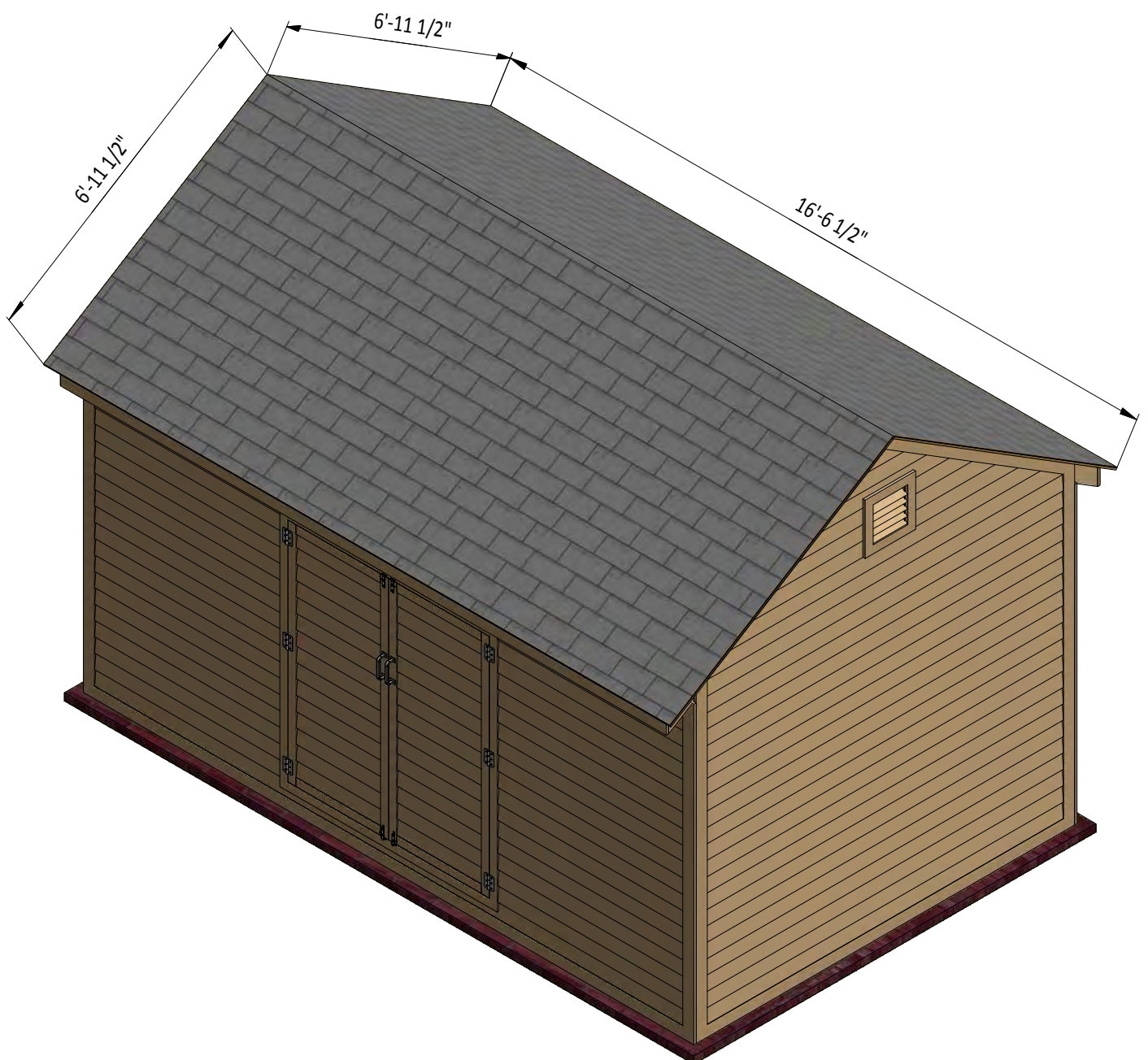
Roof Sheathing Installation

9.1 You will need 300 square feet of asphalt shingle roofing.

9.2 Add the metal drip edge to the fascias.

9.3 Cover the plywood with roofing paper.

9.4 Install asphalt shingle roofing using a hammer and nails or an industrial stapler.



STEP 10

Shed Decoration

Now that your coop is all done, you are ready to decorate it any way you want using your favorite paint, stain, or preservative.





For more great **HOW-TO** plans please visit: www.howtoplans.org

Copyright

The text and illustrations that appear here are the exclusive property of howtoplans.org and are protected by federal copyright laws. The duplication, sale or distribution of any portion of these plans without prior written consent from the original designer will be subject to the appropriate penalties for copyright infringement. Sharing this plan on the web is only permitted with an indicated original source: <https://www.howtoplans.org>